



MARICOPA COUNTY, ARIZONA

NORTH OF INTERSTATE 10, WEST OF SALOME HIGHWAY

SALOME RD

ARIZONA STATE
TRUST LAND

SUBJECT
SITE

Property
Looking Southeast

Public Land Ownership

- Federal Land
- National Forest
- Indian Community
- Regional Parks
- State Trust Land



PHONE 480.367.0700 / FAX 480.367.8341
www.NathanLandAZ.com

7600 East Doubletree Ranch Road, Suite 150
Scottsdale, AZ 85258



FOR MORE INFORMATION, CONTACT:
NATE NATHAN / nate@nathanlandaz.com
MAX NATHAN / max@nathanlandaz.com
DAN BALDWIN / dan@nathanlandaz.com
AMBER YOUNG / amber@nathanlandaz.com

WESTERN MARICOPA COUNTY, ARIZONA

NORTH OF INTERSTATE 10, WEST OF SALOME HIGHWAY

LOCATION

Located north of Interstate 10, west of Salome Highway in Maricopa County, Arizona.

SIZE

±150.12 Acres

ZONING

RU-43 | Maricopa County

PRICE

\$1,501,200 (\$10,000/Acre)

TERMS

Cash

ASSESSOR PARCEL NUMBER

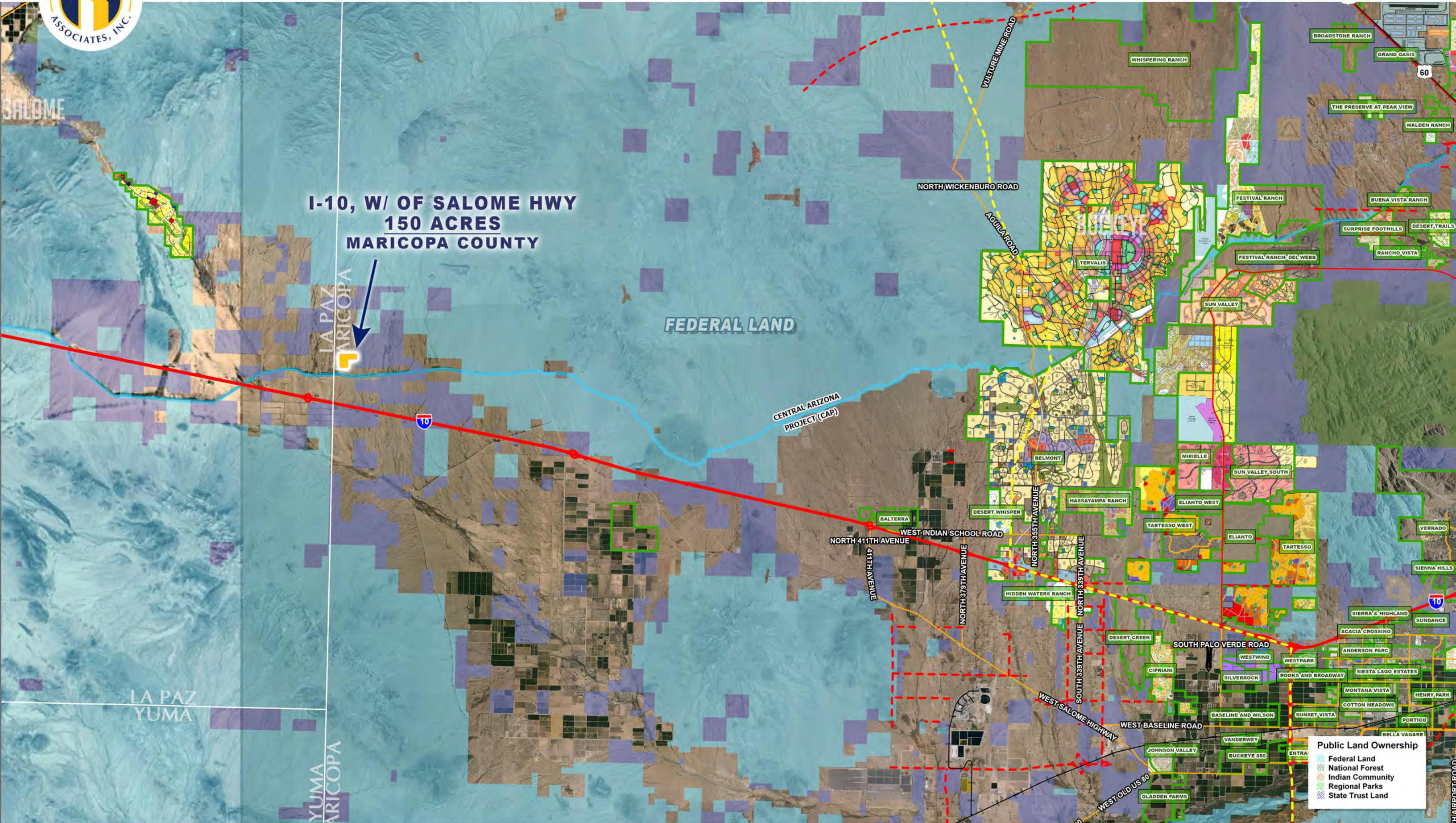
506-15-004A

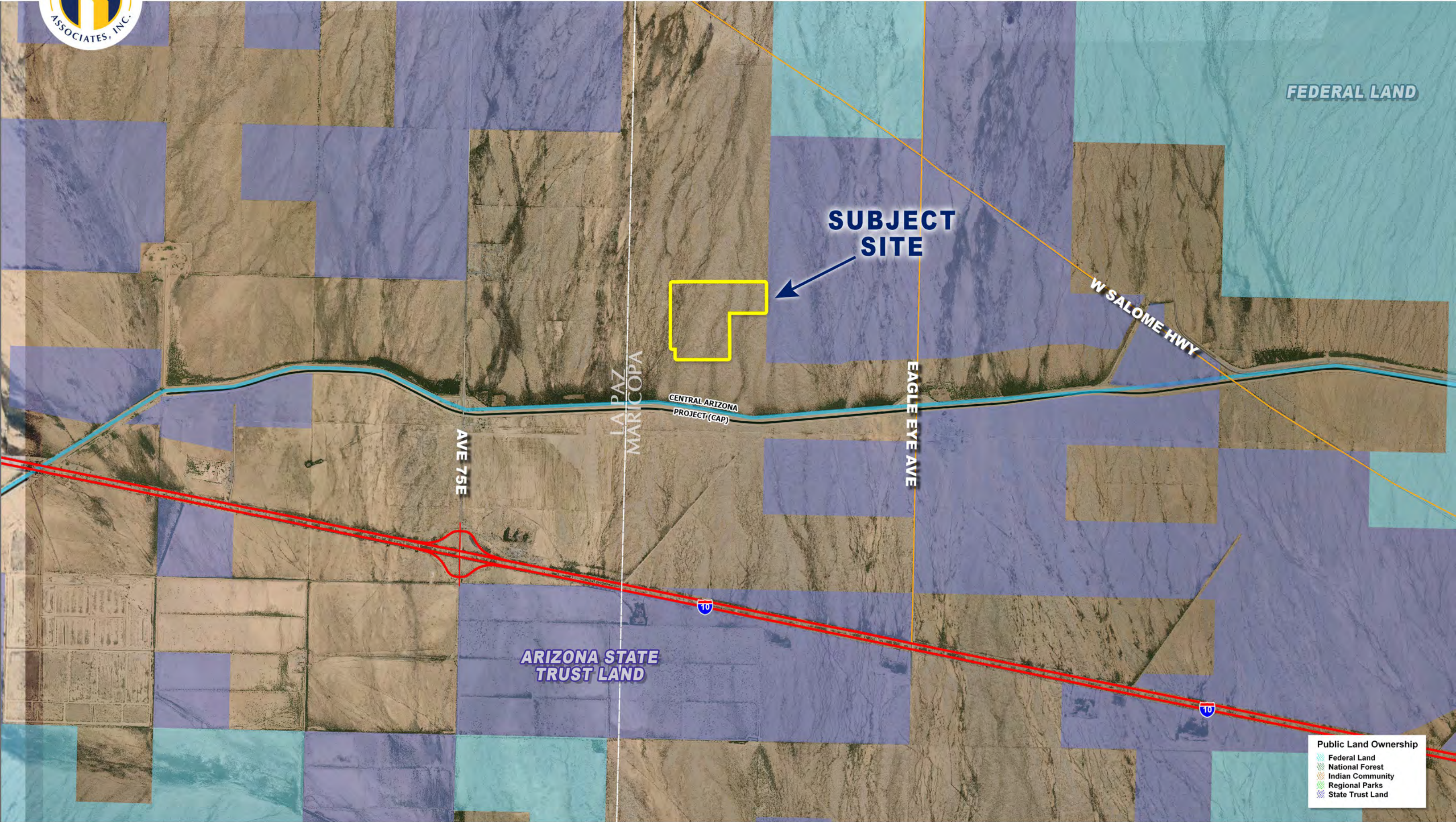
PROPERTY TAXES

2024 Assessment: \$31.14

COMMENTS

A 150.12-acre parcel in Western Maricopa County, Arizona, situated close to the Maricopa and La Paz County line. Zoned RU-43, this land is well-suited for investment opportunities or alternative energy uses.





Public Land Ownership

- Federal Land
- National Forest
- Indian Community
- Regional Parks
- State Trust Land

