



50 ACRES IN CASA GRAND WITH ASSURED WATER SUPPLY

ROSEMEAD AND WEAVER



Rosemead/Weaver
Looking Southwest

Public Land Ownership	
	Federal Land
	National Forest
	Indian Community
	Regional Parks
	State Trust Land



PHONE 480.367.0700 / FAX 480.367.8341
www.NathanLandAZ.com

7600 East Doubletree Ranch Road, Suite 150
Scottsdale, AZ 85258



50 ACRES IN CASA GRANDE WITH ASSURED WATER SUPPLY

ROSEMEAD AND WEAVER

LOCATION

South of the southwest corner of Rosemead Drive and Weaver Road in the City of Casa Grande (Pinal County), Arizona.

SIZE

50.6 Acres

ASSESSOR PARCEL NUMBER

509-60-017E

ZONING

Pinal County plan shows moderate density
1-3.5 DUA, zoning currently is CR-1A

PRICE

\$1,998,700 (or \$39,500/Acre)

TERMS

Submit

COMMENTS

Site is located just east of I-10 and south of Central Arizona College. Casa Grande is one of Arizona's fastest growing communities with massive job growth and is ½ way between Phoenix and Tucson.

DUE DILIGENCE

[Please click to view](#)

ALTA Survey

Calibur Flood Map Casa Grande

Chaparral Estates Unit 3 Certificate of Assured Water, 12-19-2005

Groundwater Replenishment Agreement, 10.15.01

Groundwater Replenishment CC&Rs, 10.15.01

Owners Policy – Boardwalk, 6.16.22



CASA GRANDE QUICK FACTS



POPULATION

2020 population: **57,581**
Annual population growth: **2.68%**
Median age of **34.1**



GROWTH

Population estimate 2030: **75,049**
Number of households: **18,475**



ACTIVITIES

Casa Grande draws **golfers year-round**, with excellent play at a variety of area courses. Stroll through **historic downtown Casa Grande**, one of Arizona's Main Street communities, with more than 40 buildings in national and local historic registers. **Hike, bike** and even take a **farm or dairy tour**.



BUILDING ACTIVITY (2020)

Cavan Commercial **+12%**
SKW Contractors LLC **+43%**
Consolidated Resources **+44%**

PLANNING AND DEVELOPMENT (2020)

Cives Steel Company **+66%**
Source: casagrandeaz.gov



TOP EMPLOYERS

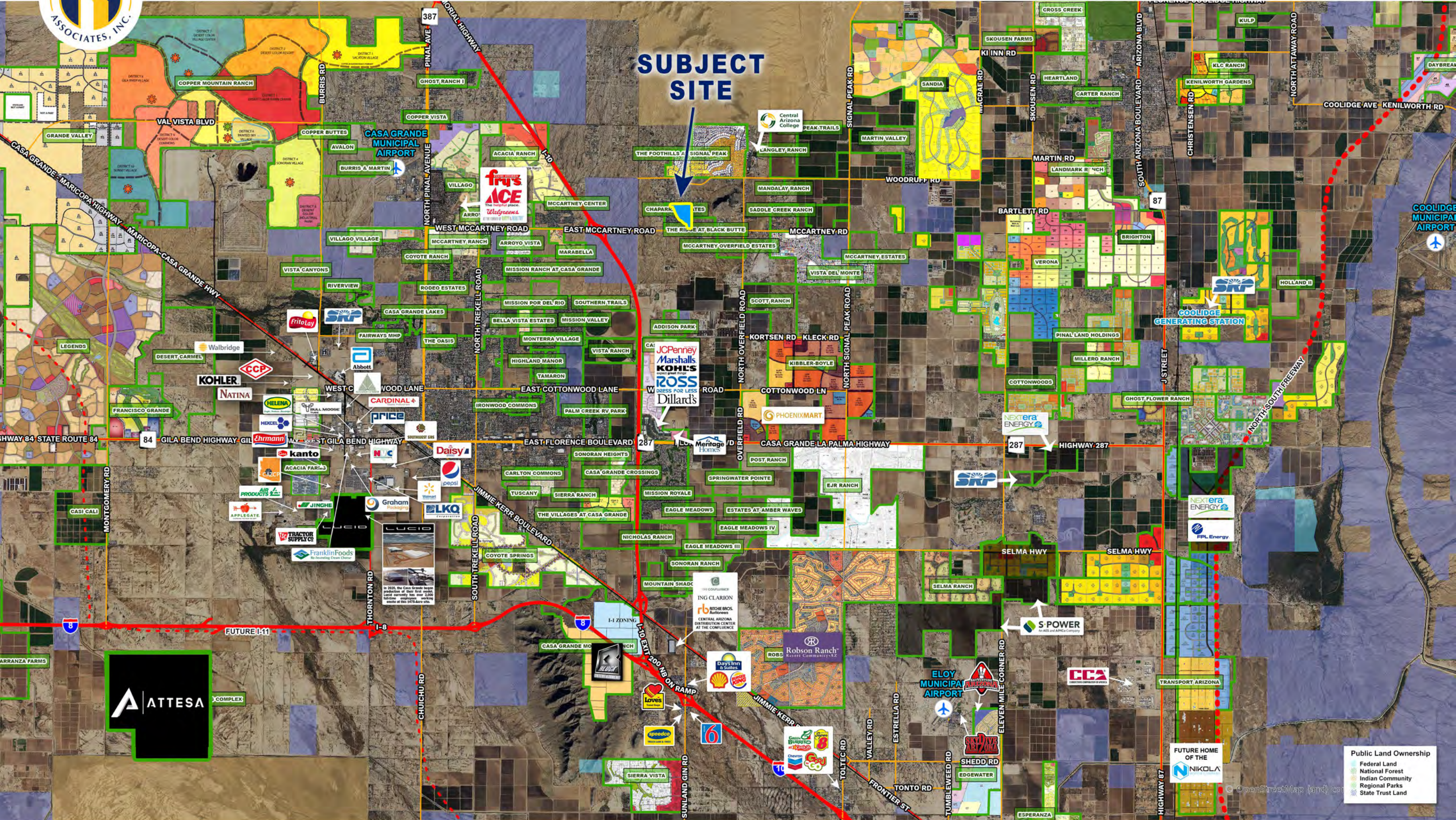
Abbott Nutrition **450**
ACO Polymer **4,400 (worldwide)**
Daisy Brand **400**
Frito Lay **325**
Hexcel Corporation **6,000 (worldwide)**
MonsantoCotton Research Center **25,000 people (worldwide)**
Wal-Mart Distribution **400**
Source: casagrandeaz.gov



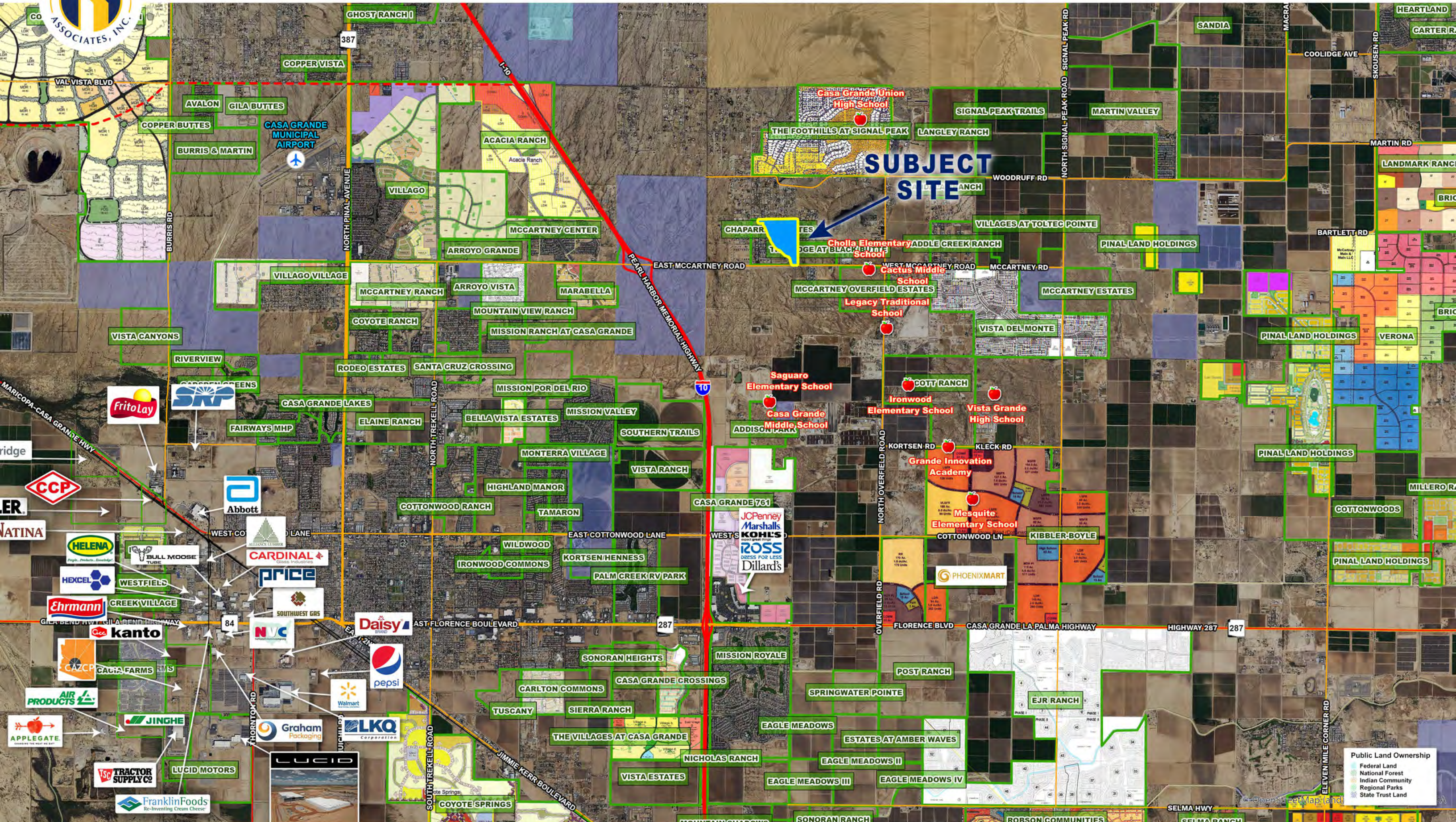
LAND USE

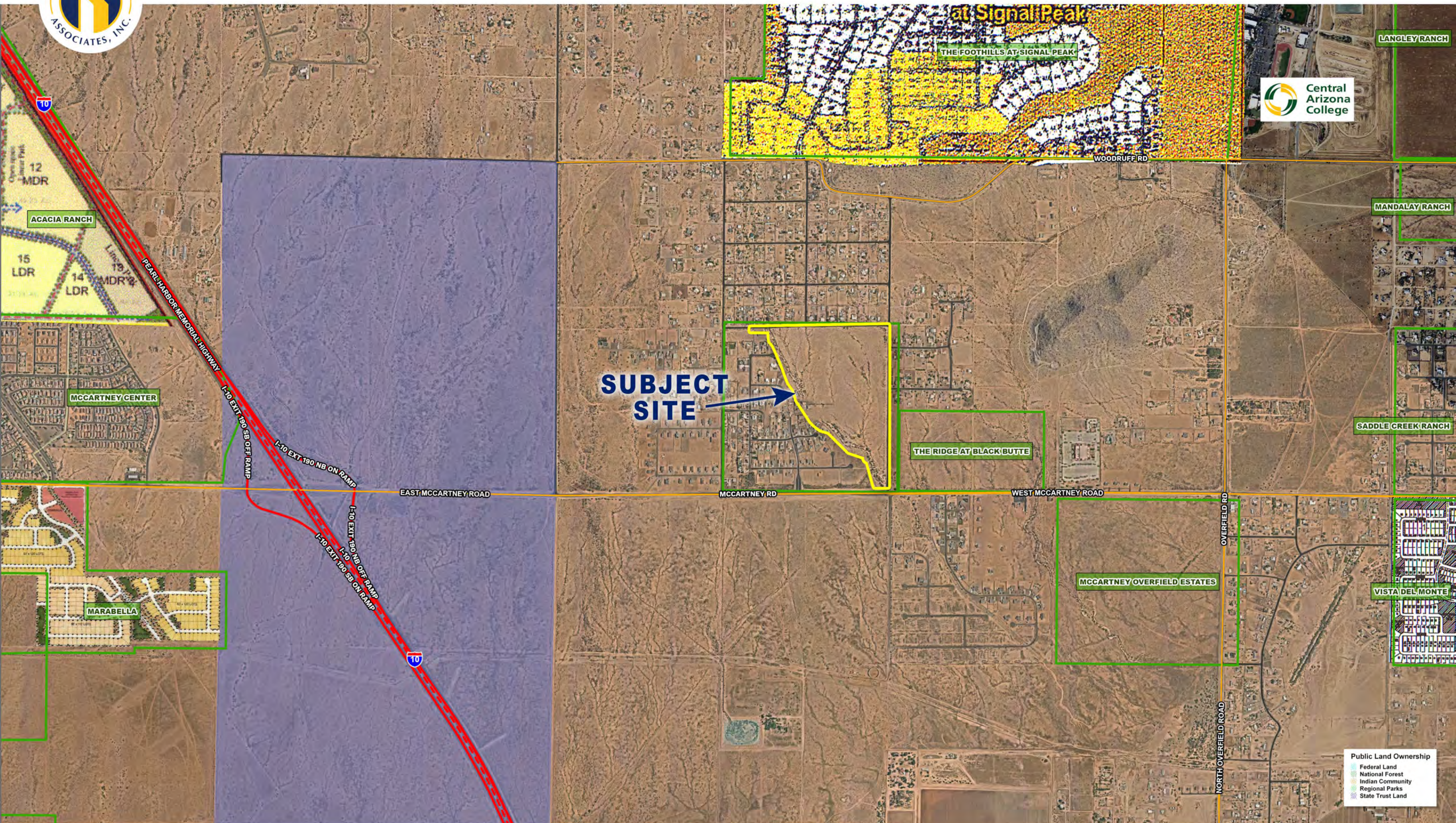
81% of the more than 71,000 acres of land within the City's incorporated limits is **undeveloped or in agricultural use**. **Residential development and government uses** comprise the next two largest categories of land use totaling **12%**.
Source: casagrandeaz.gov





SUBJECT SITE





SUBJECT SITE

