



NORTHWEST CORNER

211TH AVENUE AND DOVE VALLEY ROAD



PHONE 480.367.0700 / FAX 480.367.8341
www.NathanLandAZ.com

7600 East Doubletree Ranch Road, Suite 150
Scottsdale, AZ 85258



FOR MORE INFORMATION, CONTACT:
NATE NATHAN / nate@nathanlandaz.com
MAX NATAHN / max@nathanlandaz.com

MARICOPA COUNTY, ARIZONA

211TH AVENUE AND DOVE VALLEY

LOCATION

The property is located at the northwest corner of 211th Avenue and Dove Valley Road in Maricopa County, Arizona.

SIZE

±56.98 Acres

PARCEL AVAILABILITY

503-17-017U and 503-17-435

ZONING

RU-43 | Maricopa County

*Maricopa County General Plan shows Industrial Zoning

PRICE

Submit

TERMS

Cash

UTILITIES

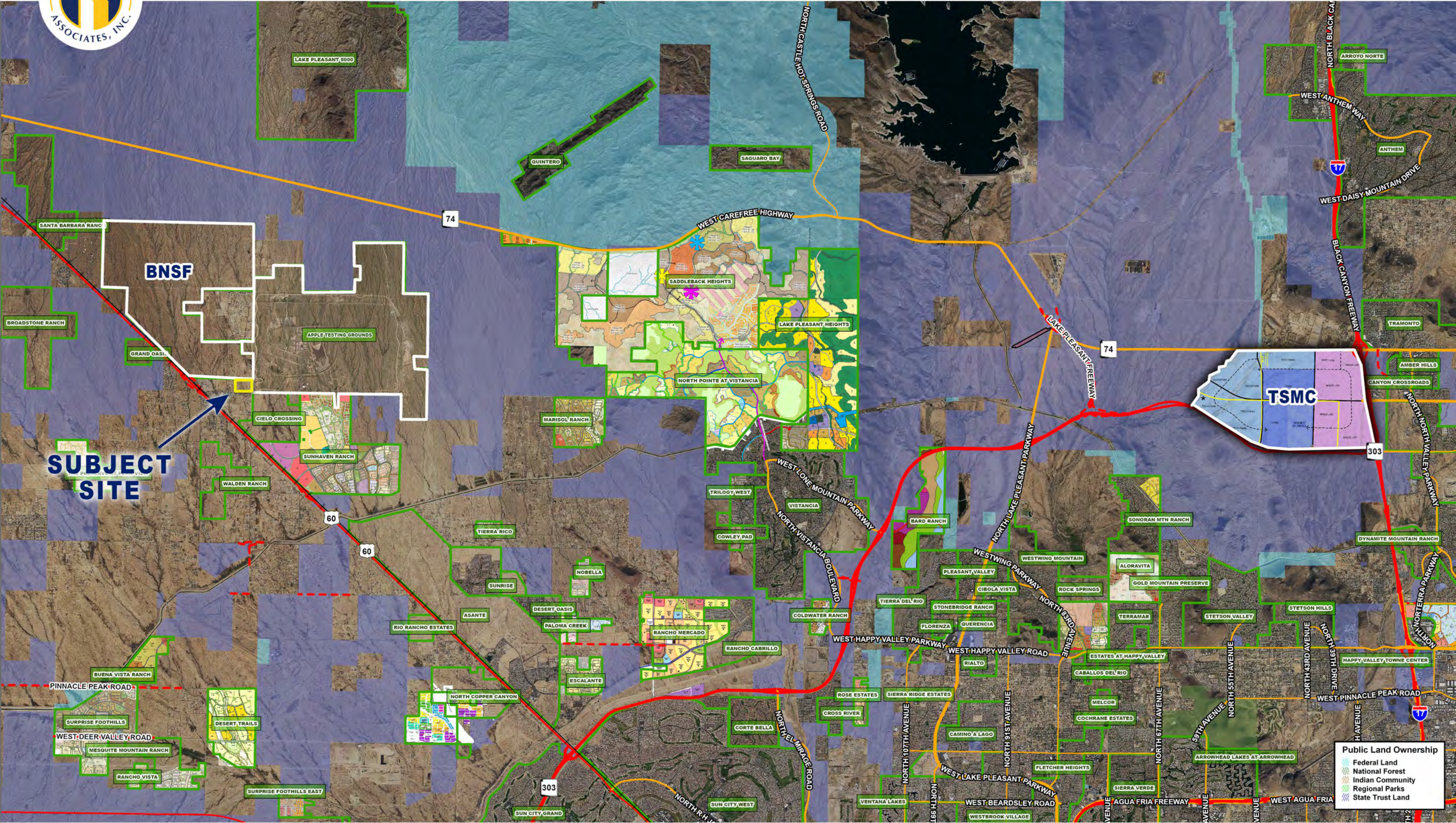
Electricity: APS

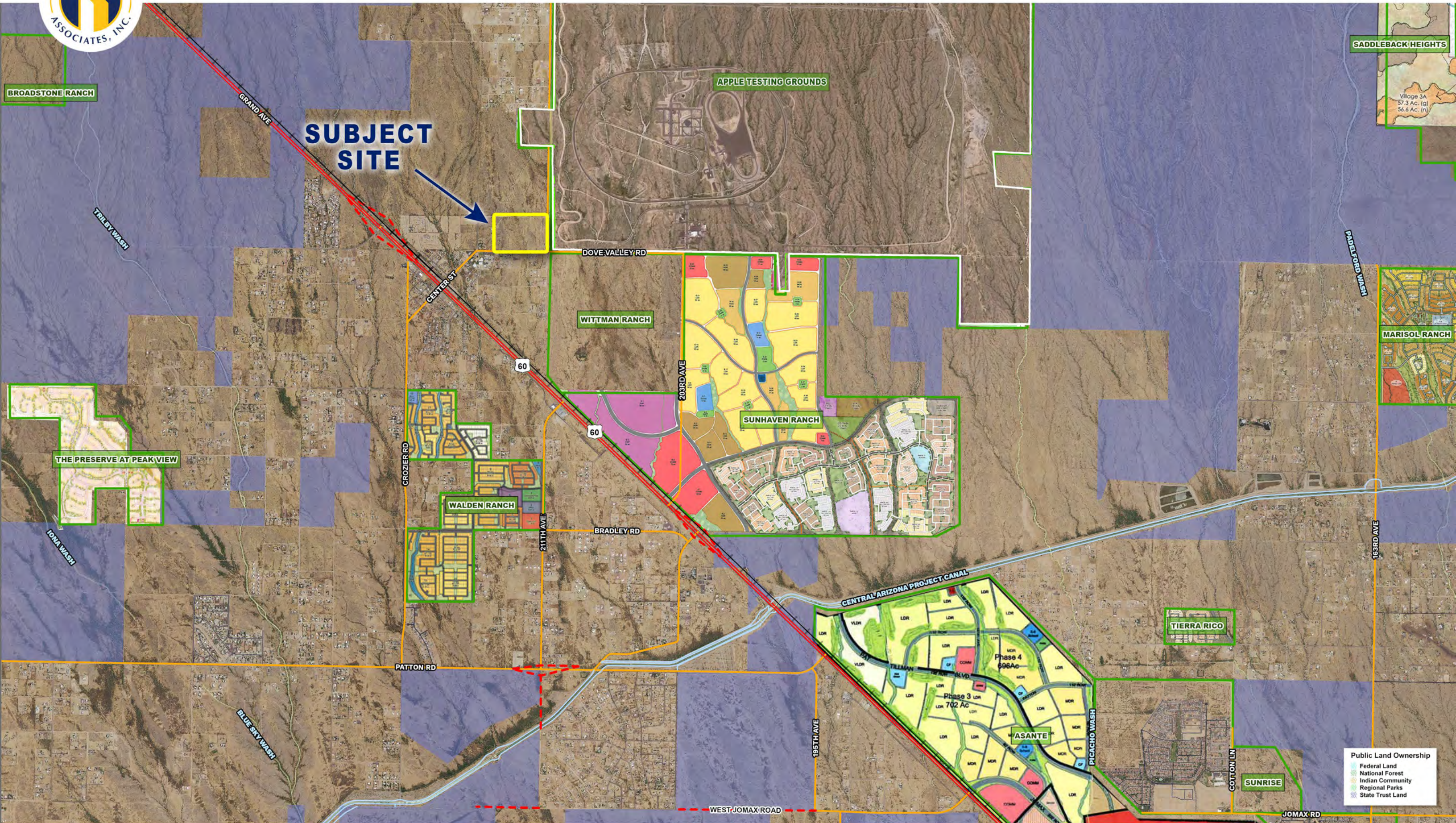
Water: West End Water Company

Gas: Southwest Gas

COMMENTS

Site is located in Maricopa County within the rapidly growing Northwest Valley Submarket, and is surrounded by the master planned communities of Vistancia, Sunhaven, North Copper Canyon, Surprise Foothills and Asante.





MARICOPA COUNTY

PLANNING AND DEVELOPMENT DEPARTMENT

5W

4W

3W

2W

1W

1E

2E

7N

6N

5N

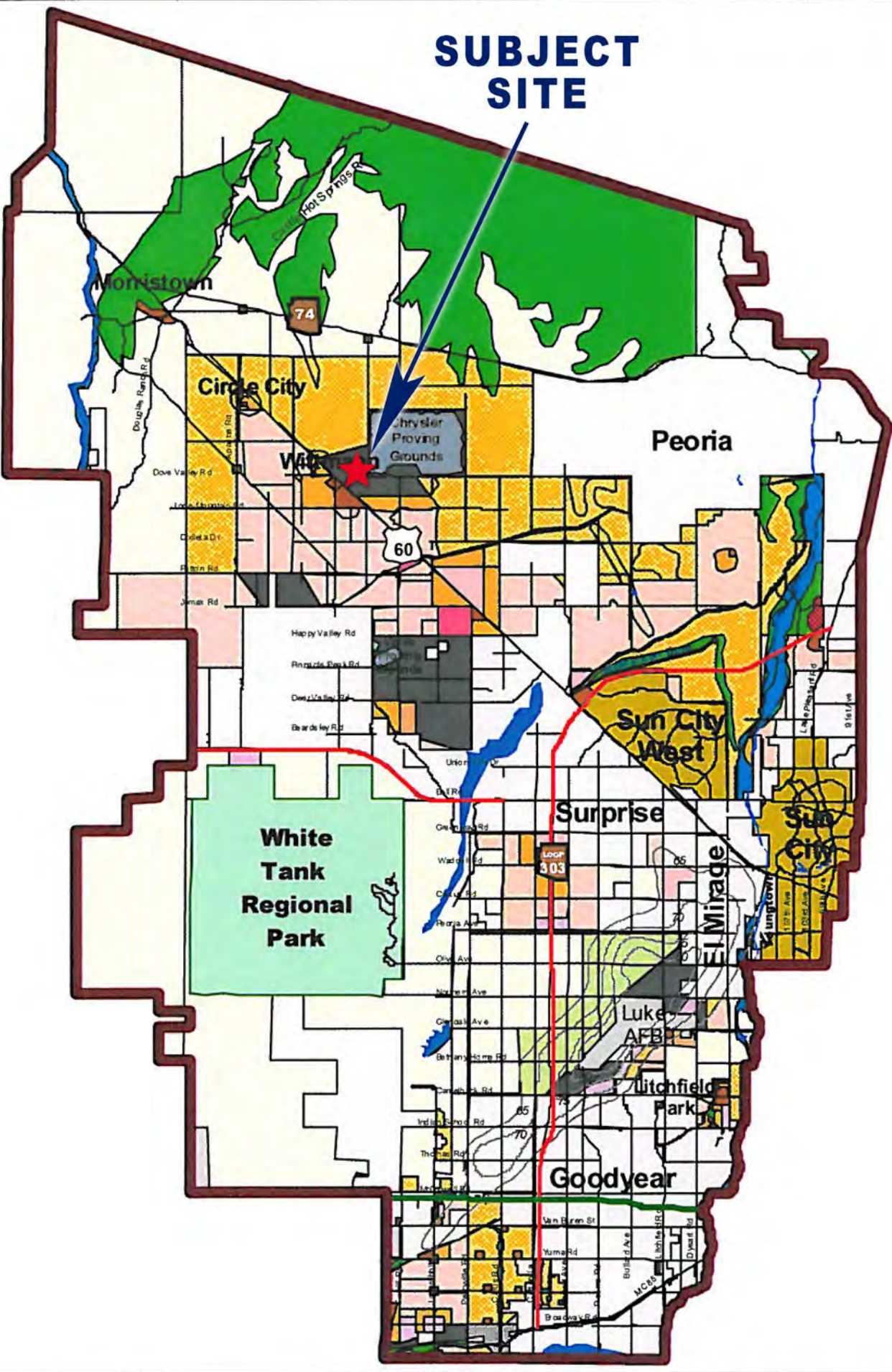
4N

3N

2N

1N

SUBJECT
SITE



Land Use

- Agriculture
- Airport
- Business Park
- Community Retail Center
- Dedicated or Non-developable Open Space
- Educational
- High Density Residential
- Hotel, Motel or Resort
- Industrial
- Institutional
- Large Assembly Area
- Large Lot Residential

- Medium Density Residential
- Mixed Use
- Neighborhood Retail Center
- Office
- Public Facility
- Recreational Open Space
- Regional Retail Center
- Rural
- Small Lot Residential
- Transportation
- Unknown
- Warehouse/Distribution Center

- Planning Area Boundary
- Luke AFB Noise Contours
- Water Channel
- Incorporated Area
- Interstate
- Future Freeway
- Arterial Street

Planned Land Use

Figure 4



1 0 1 2 3 4 5 6 Miles

White Tank / Grand Avenue Area Plan

Source: Maricopa Association of Governments, Maricopa County, and municipal general plans

