



FOR MORE INFORMATION, CONTACT:
DAN BALDWIN / dan@nathanlandaz.com
RYAN DUNCAN / ryan@nathanlandaz.com

CITY OF ELOY, ARIZONA

MILLIGAN ROAD AND SUNSHINE BOULEVARD

LOCATION

Located south of the southwest corner of Milligan Road and Sunshine Boulevard in the City of Eloy (Pinal County), Arizona.

SIZE

16.48 Acres

ASSESSOR PARCEL NUMBER

411-38-001L

ZONING

General Commercial District (C-2) | Eloy, Arizona

The purpose of this commercial zoning district is to provide a location for general business and commercial uses. The intent of this district is to allow for larger commercial uses to satisfy the needs of the community at large while providing for a broad range of retail, office and service-oriented activities. (Ord. 04-569, 6-7-2004).

PRICE

Submit

TERMS

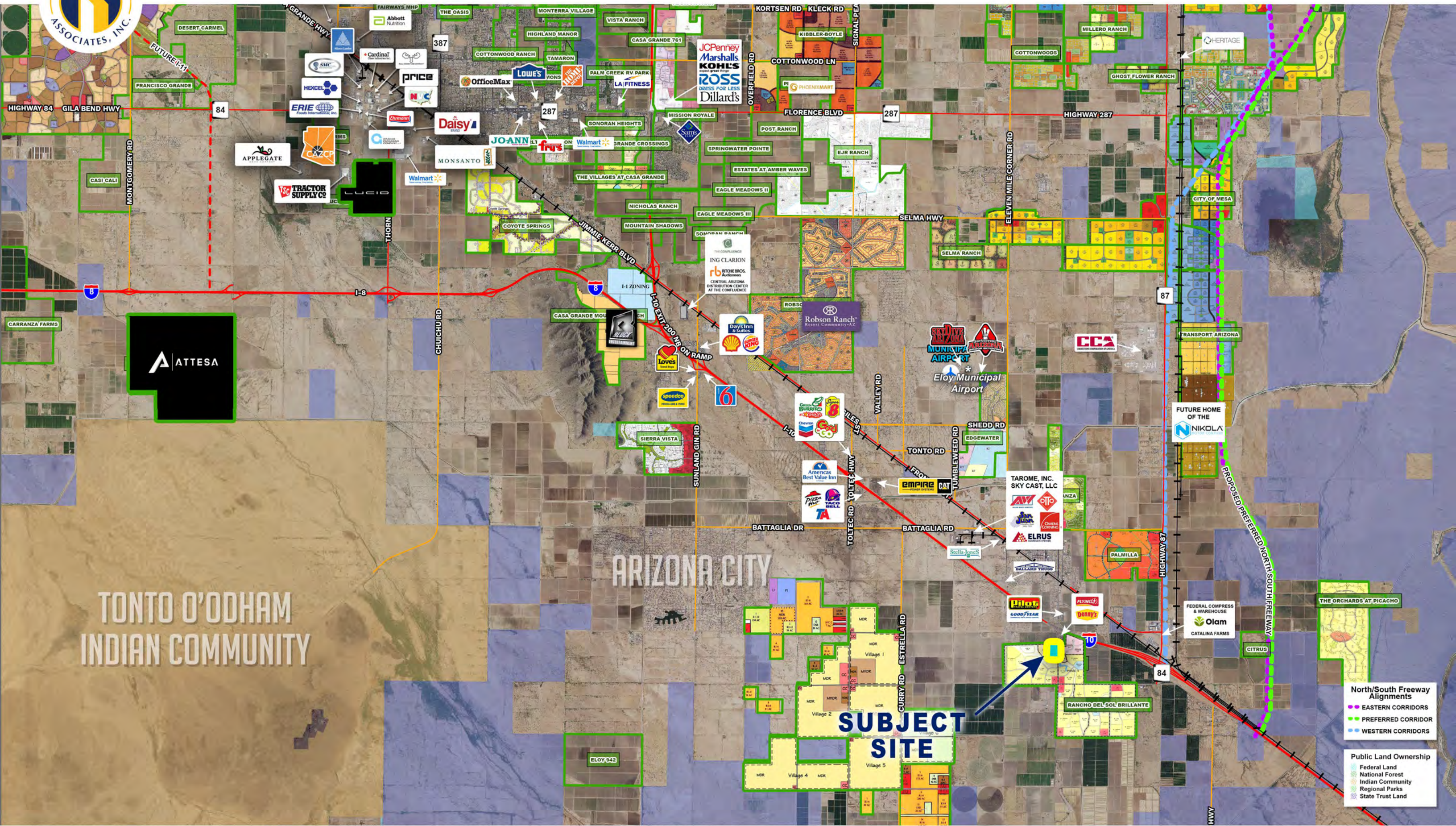
Submit

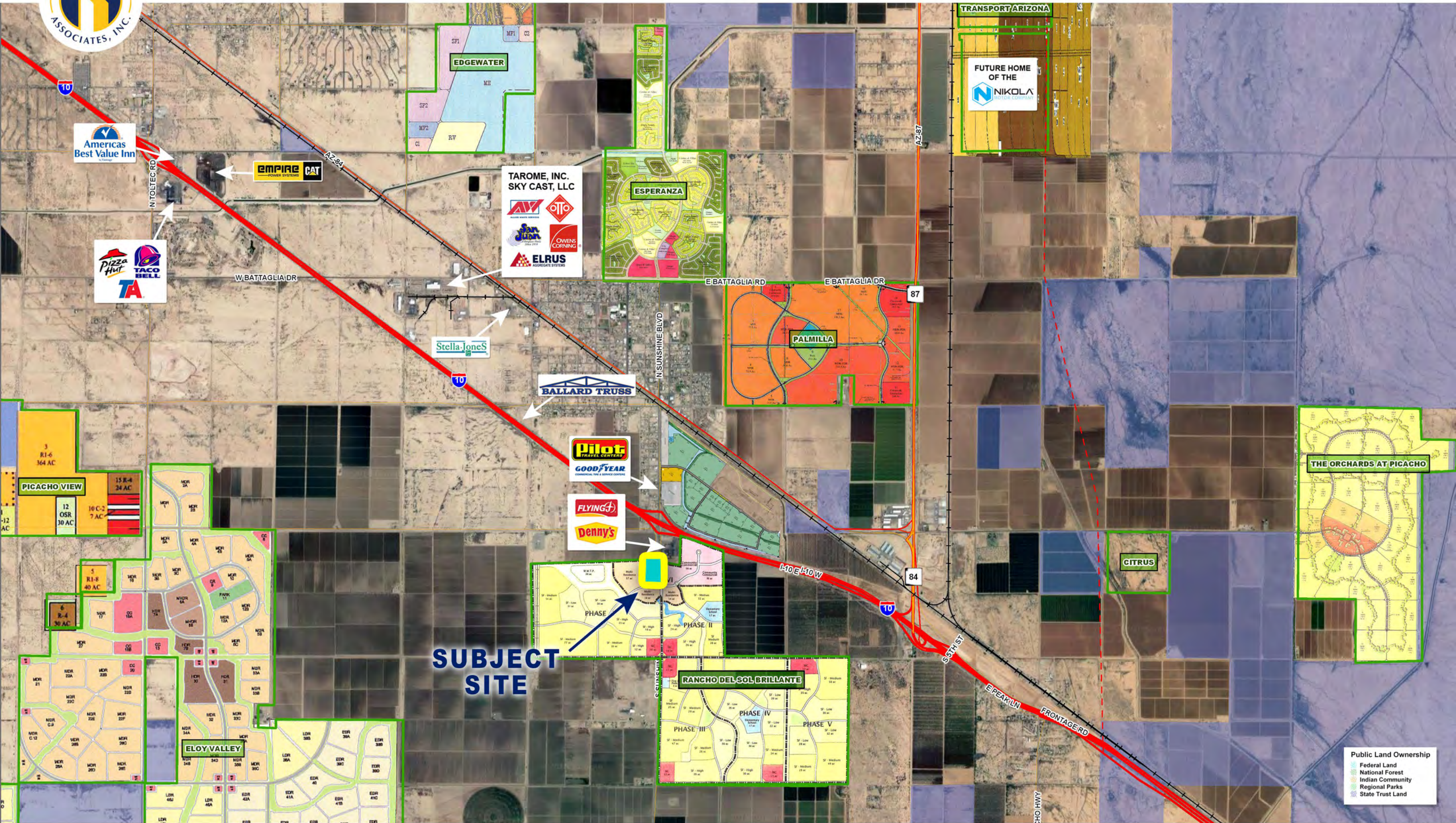
UTILITIES

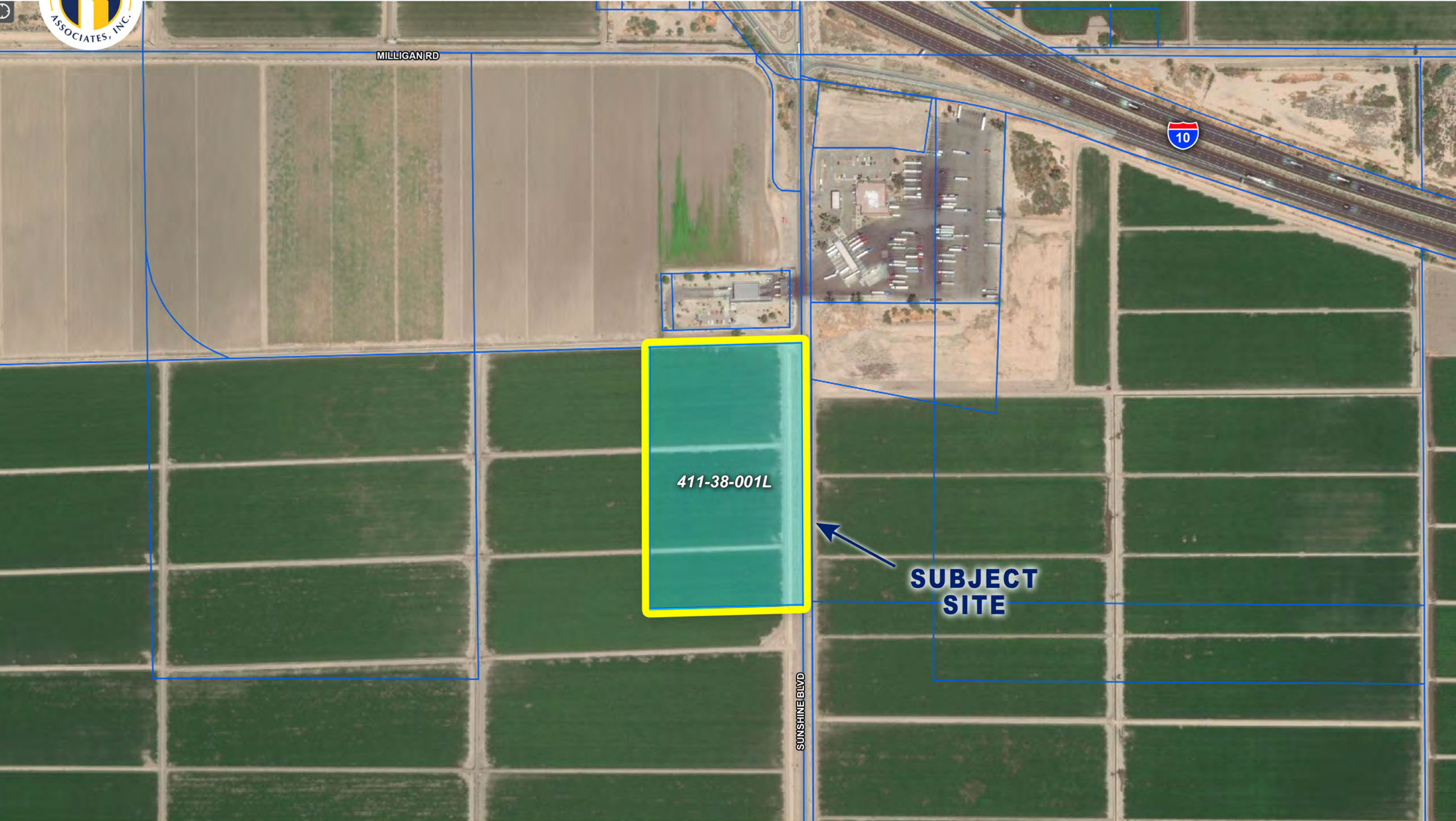
Water and Sewer: City of Eloy
(See enclosed page 7 for City of Eloy
Water & Wastewater Service Area Map)



MILLIGAN ROAD AND SUNSHINE BOULEVARD / PINAL COUNTY SUBMARKET

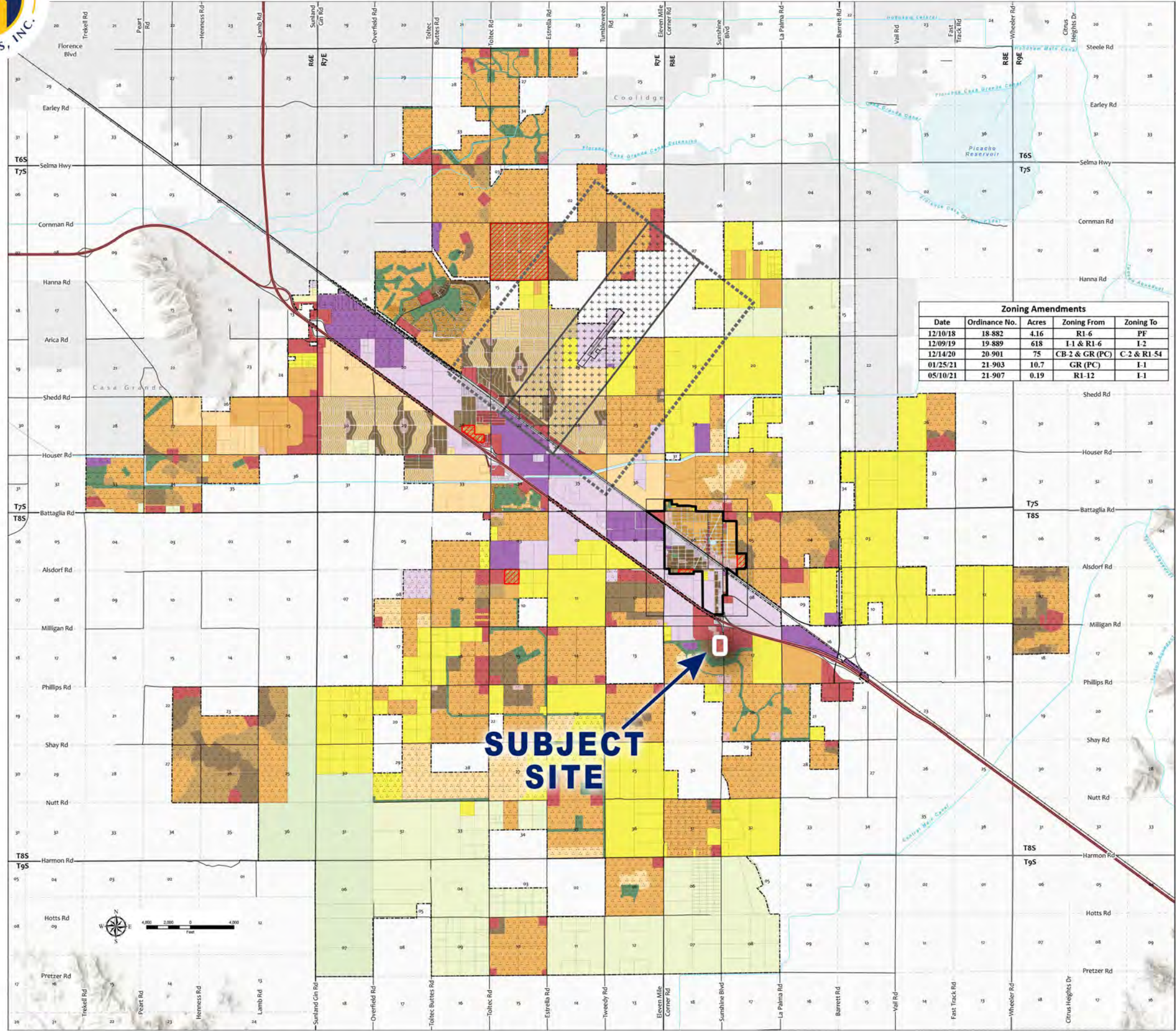








MILLIGAN ROAD AND SUNSHINE BOULEVARD / CITY OF ELOY ZONING MAP



OFFICIAL ZONING MAP

City of
ELOY, ARIZONA

Residential Districts

- RR-20 Rural Residential (20 acres/du)
- RR-5 Rural Residential (5 acres/du)
- RR-2.5 Rural Residential (2.5 acres/du)
- R1-54 Estate Residential (54,450 sq. ft./du)
- R1-43 Estate Residential (43,560 sq. ft./du)
- R1-12 Single Family Residential (12,000 sq. ft./du)
- R1-6 Single Family Residential (6,000 sq. ft./du)
- R-2 Small Lot Residential (6-10 du/acre)
- R-3 Multiple Family Residential (10-24 du/acre)

Commercial Districts

- C-1 Neighborhood Commercial
- C-2 Community Commercial
- MU Mixed Use

Industrial Districts

- BP Business Park
- I-1 Light Industrial
- I-2 General Industrial

Public Facility Districts

- PF Public Facility

Open Space Districts

- OSC Open Space Conservation
- OSR Open Space Recreational

Overlay Districts

- DCO - Downtown Core Overlay
- MHO - Manufactured Home Overlay
- PAD - Planned Area Development
- AO - Aviation Overlay
- AIZ - Airport Influence Zone (1.5 nautical miles)

Zoning Amendments

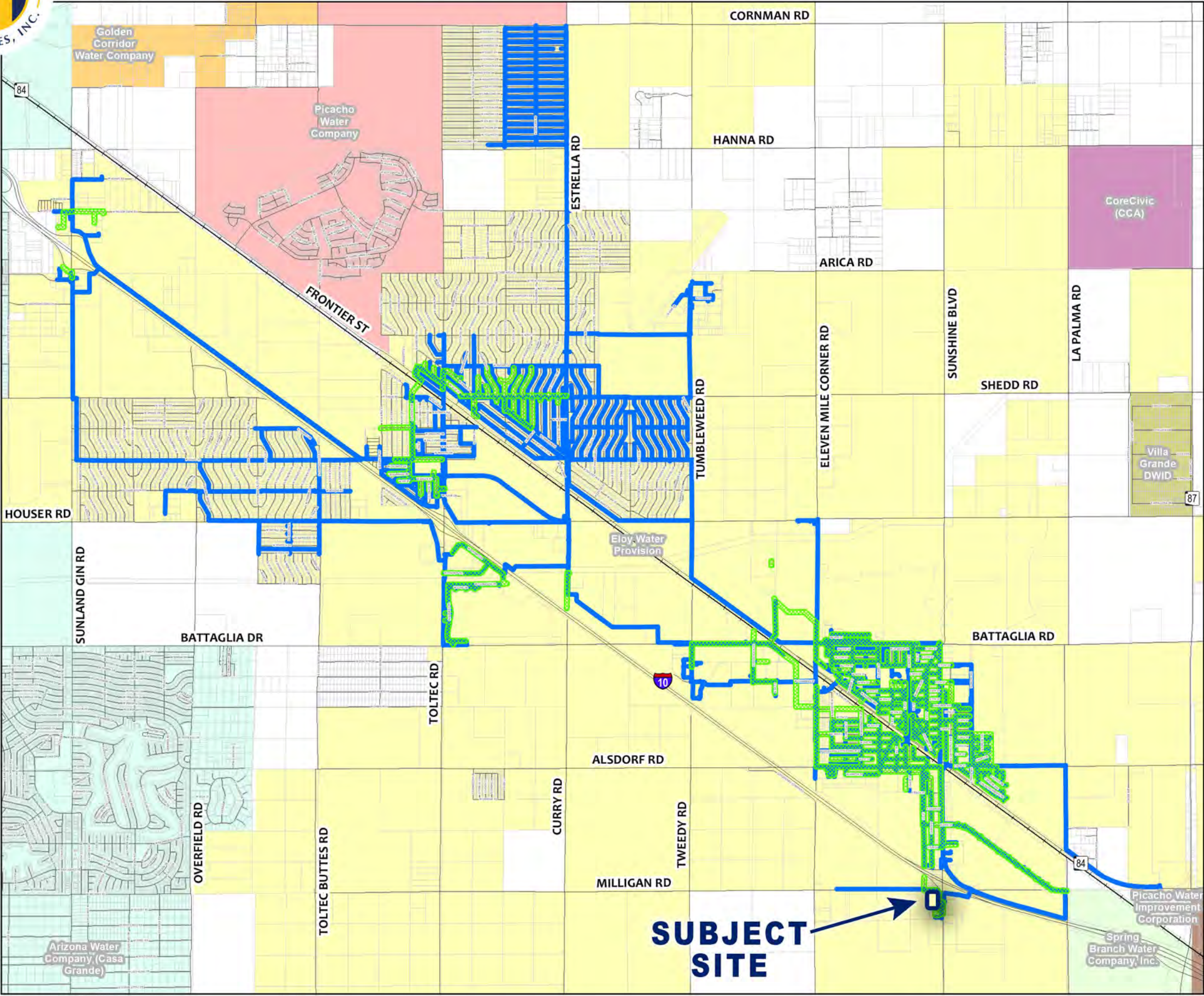
Date	Ordinance No.	Acres	Zoning From	Zoning To
12/10/18	18-882	4.16	R1-6	PF
12/09/19	19-889	618	I-1 & R1-6	I-2
12/14/20	20-901	75	CB-2 & GR (PC)	C-2 & R1-54
01/25/21	21-903	10.7	GR (PC)	I-1
05/10/21	21-907	0.19	R1-12	I-1

Map Inset: Downtown Eloy

Adapted by Ordinance No. 18-878 on 23 July 2018.

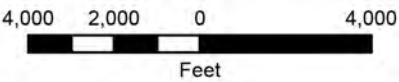
Disclaimer: This map was compiled and prepared to illustrate the zoning within the City of Eloy from the most current and accurate sources generally available at the time of publication. The provisions of Eloy City Code Chapter 10: Zoning Districts shall apply. Information portrayed on this map is approximate, and does not replace site survey or other official documentation. Every reasonable attempt has been made to ensure content accuracy, but the City of Eloy makes no guarantees.

DATE: February 26, 2021



City of Eloy Water & Wastewater Service Area Map

Date: 2/11/2021



Eloy Service Areas

- Eloy Water Service Area
- Eloy Wastewater Service Area

Water Providers

- Eloy Water Provision
- Arizona Water Company (Casa Grande)
- CoreCivic (CCA)
- Golden Corridor Water Company
- Picacho Water Company
- Picacho Water Improvement Corporation
- Spring Branch Water Company, Inc.
- Villa Grande DWID

Disclaimer: This map is furnished for reference purposes only and is not suitable for legal, financial, engineering, or surveying purposes or commitments. The City of Eloy assumes no responsibility for errors, omissions, or inaccuracies presented, and shall have neither liability nor responsibility for any direct or indirect loss or damage in connection with, or arising from, the information on this map. Any conclusions derived from this map are the responsibility of the user.