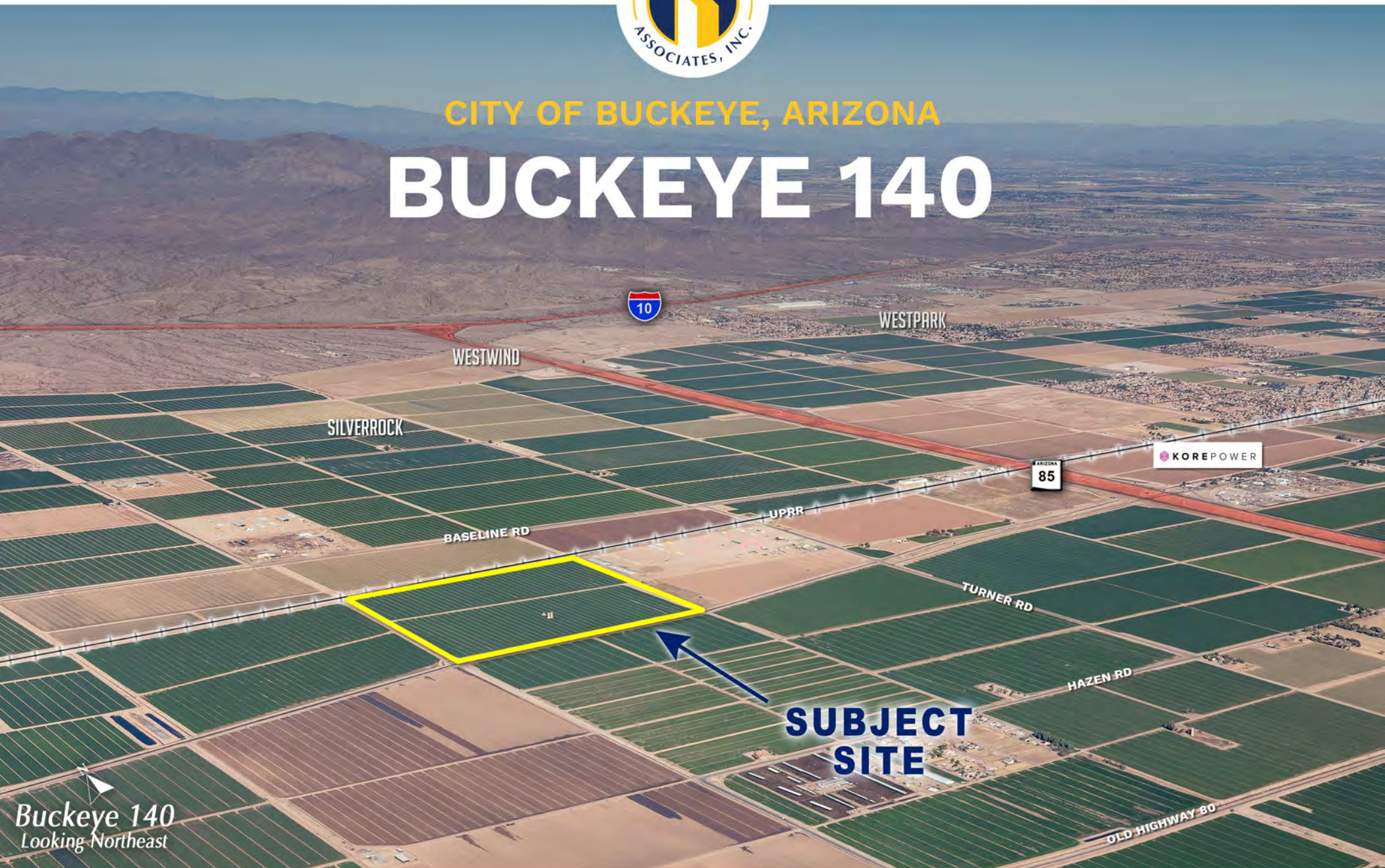




CITY OF BUCKEYE, ARIZONA

BUCKEYE 140



PHONE 480.367.0700 / FAX 480.367.8341
www.NathanLandAZ.com

7600 East Doubletree Ranch Road, Suite 150
Scottsdale, AZ 85258



FOR MORE INFORMATION, CONTACT:
NATE NATHAN / nate@nathanlandaz.com
MAX NATHAN / max@nathanlandaz.com

CITY OF BUCKEYE, ARIZONA

BUCKEYE 140

LOCATION

Located southwest of Baseline Road and Turner Road in the City of Buckeye, Arizona.

SIZE

±140.26 Acres

ASSESSOR PARCEL NUMBERS

401-08-003A and 401-08-004

ZONING

General Commerce | City of Buckeye

PRICE

\$45,000 Per Acre or \$6,311,700

TERMS

Cash

PROPERTY TAXES

2021 Assessment: \$7,328.78

DUE DILIGENCE

[Please click to view](#)

ALTA Survey

City Capital Improvement Program

Existing Water Map

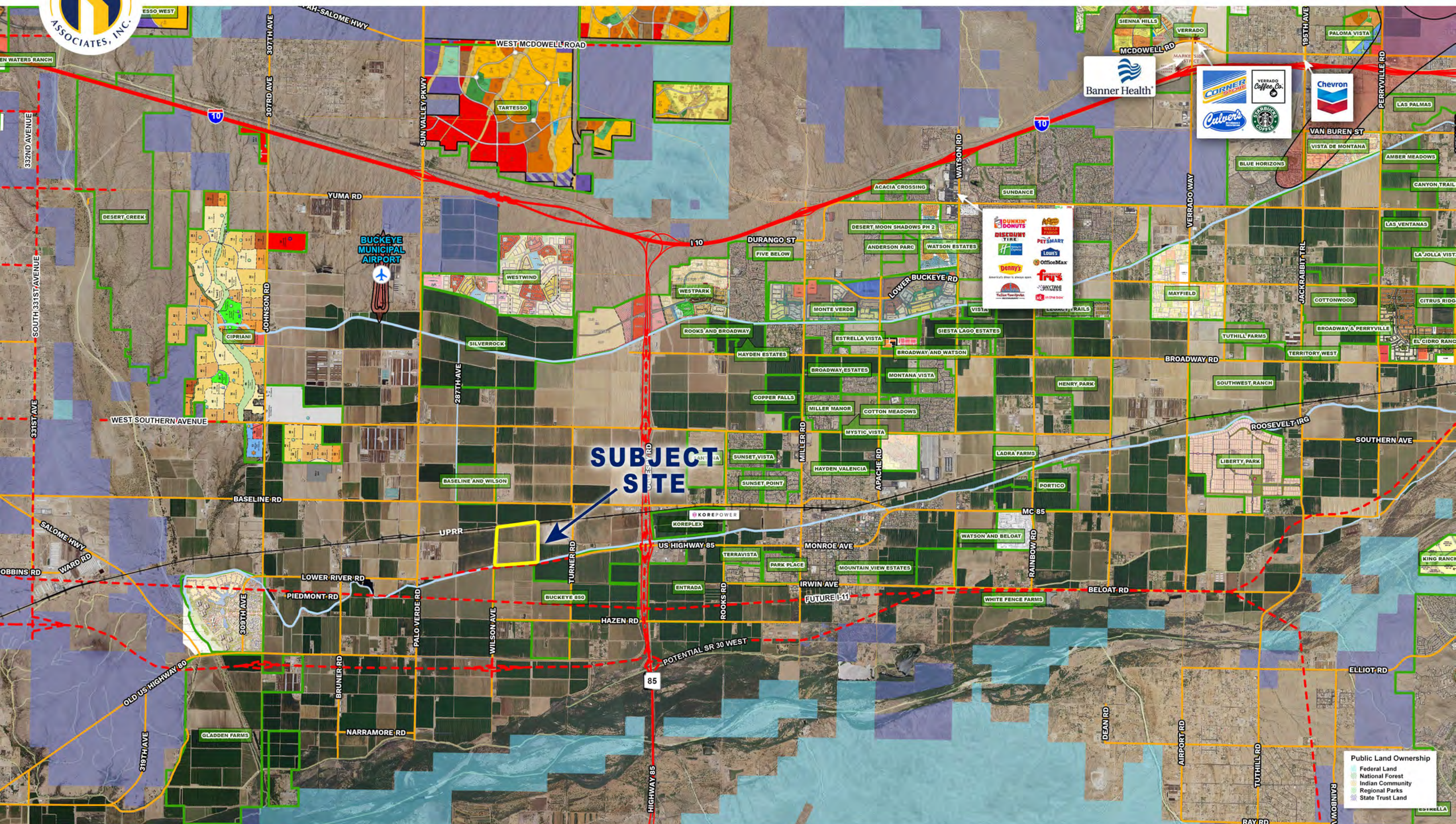
Acreage Breakdown

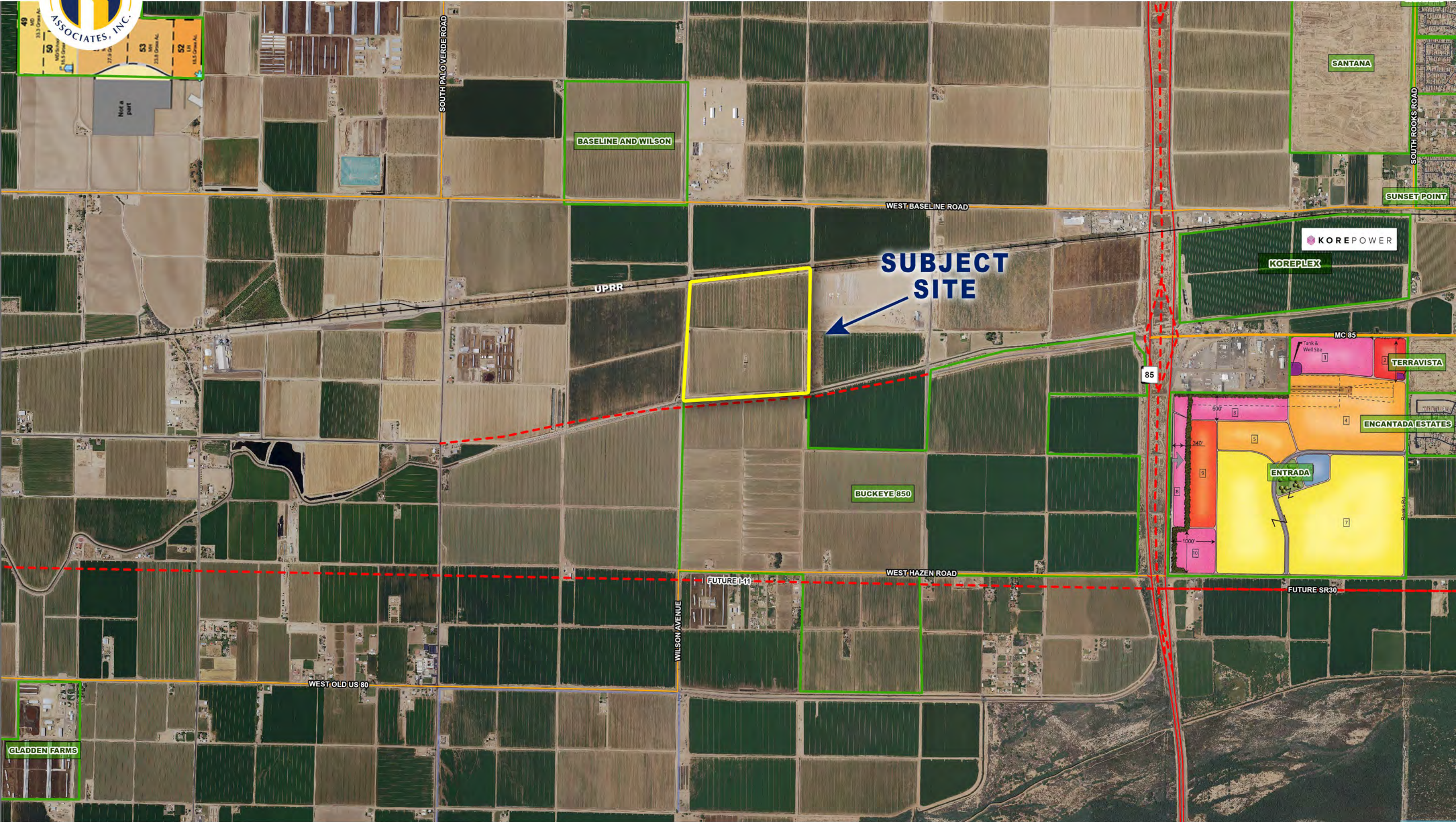
Buildout Water & Sewer Maps

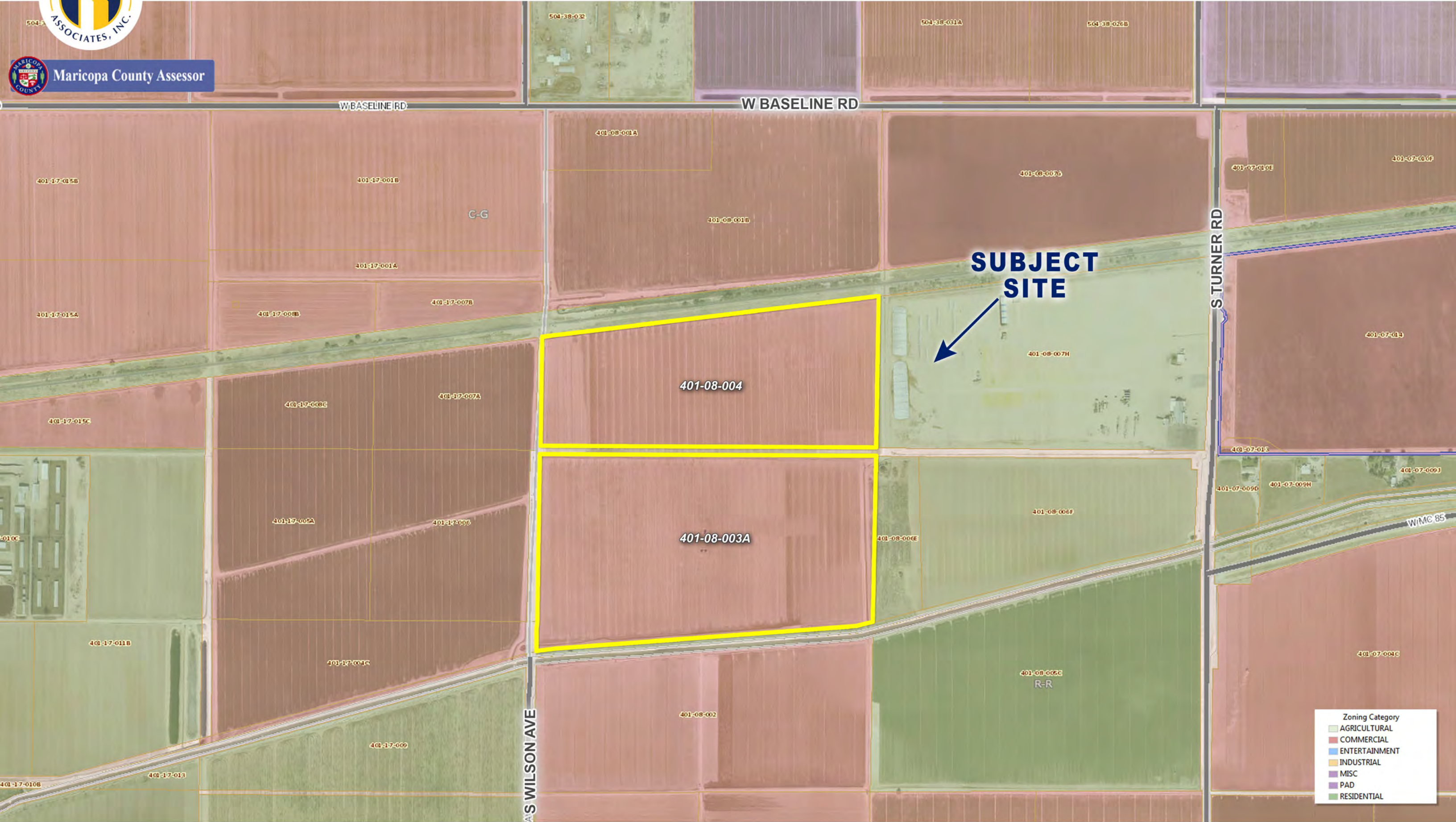
Parcel Sketch

COMMENTS

Subject is a rail-served, employment designated site. KORE Power recently announced the first lithium-ion battery manufacturing facility (wholly owned by a U.S. company) will be built 1.5 miles away from the subject site. [Click for more details.](#)







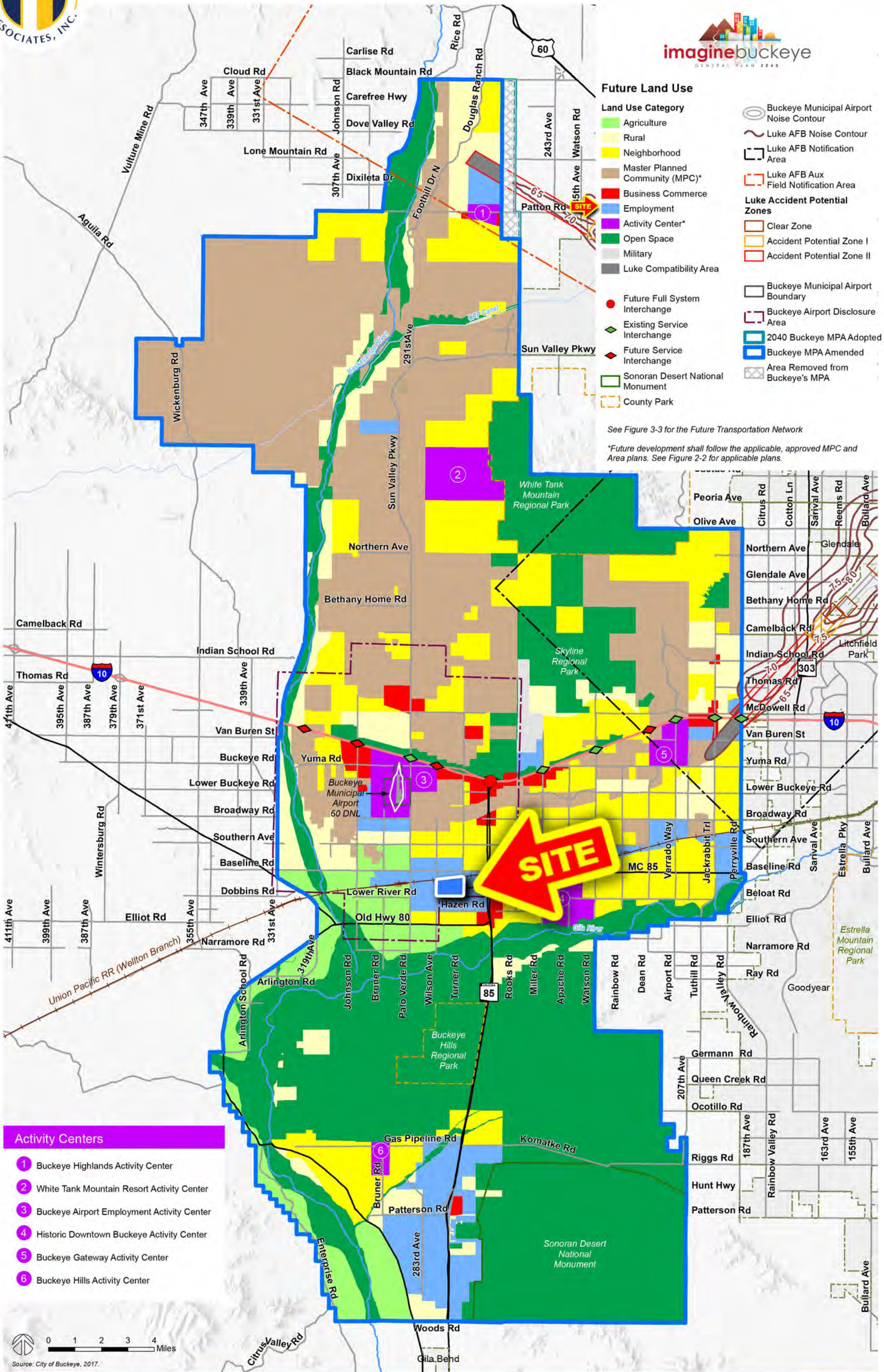


Figure 2-3

Future Land Use