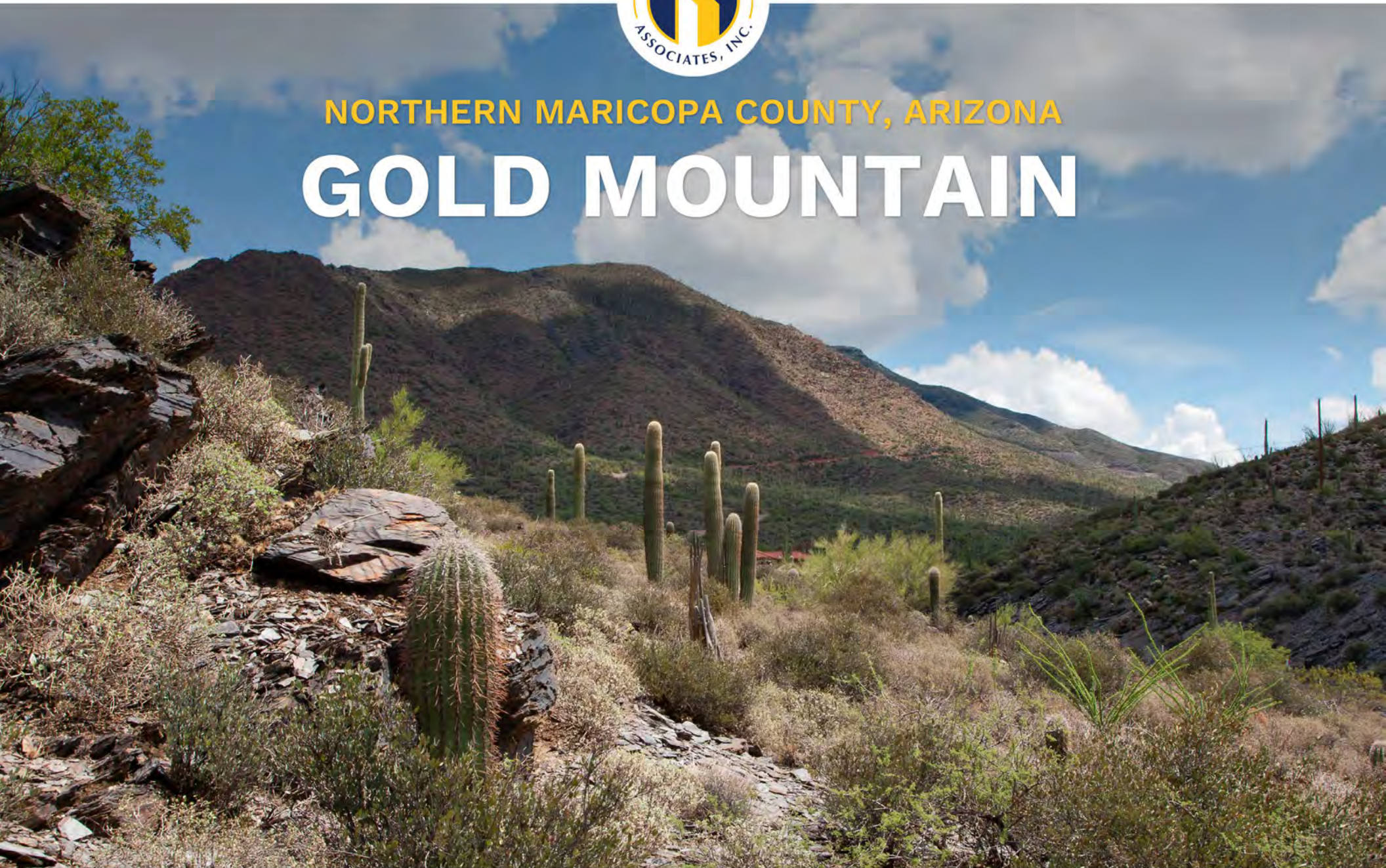




NORTHERN MARICOPA COUNTY, ARIZONA
GOLD MOUNTAIN



PHONE 480.367.0700 / FAX 480.367.8341
www.NathanLandAZ.com

7600 East Doubletree Ranch Road, Suite 150
Scottsdale, AZ 85258



FOR MORE INFORMATION, CONTACT:
RYAN DUNCAN / ryan@nathanlandaz.com
DAN BALDWIN / dan@nathanlandaz.com

NORTHERN MARICOPA COUNTY, ARIZONA

GOLD MOUNTAIN

LOCATION

Located east of the northeast corner of School House Road and Fleming Springs Road in Maricopa County, Arizona.

SIZE AND PARCEL INFORMATION

Parcel	Acreage	2024 Property Taxes
202-17-026D	62.49	\$18.14
202-17-001Q	40.00	\$11.68
202-17-001R	89.56	\$26.04
202-17-001P	30.00	\$8.76
202-17-050	64.76	\$18.86
202-17-054	36.20	\$10.52
202-17-055	36.22	\$10.52
202-17-048A	36.60	\$10.62
202-17-047A	36.29	\$10.52
202-17-049A	41.24	\$11.98

Parcel	Acreage	2024 Property Taxes
202-17-046B	36.38	\$10.56
202-17-044A	39.87	\$11.62
202-17-045A	40.00	\$11.62
202-17-046A	36.47	\$10.56
202-17-016C	50.00	\$14.54
202-17-002M	45.23	\$13.16
202-17-041A	36.26	\$10.52
202-17-043A	36.46	\$10.56
202-17-016B	30.00	\$8.76
Total	824.03	\$239.54

TERMS

Cash or Submit for Seller consideration

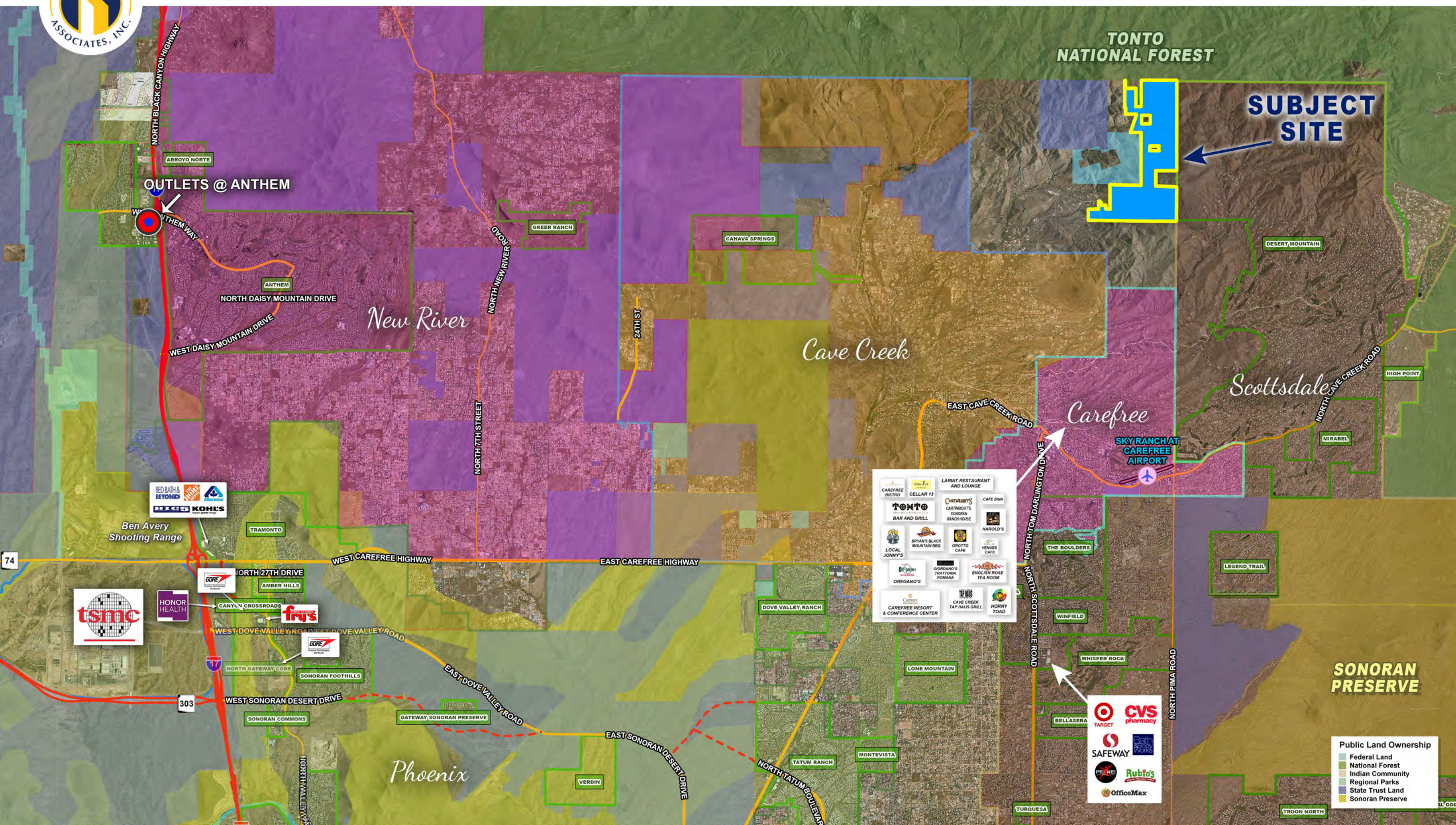
PRICE

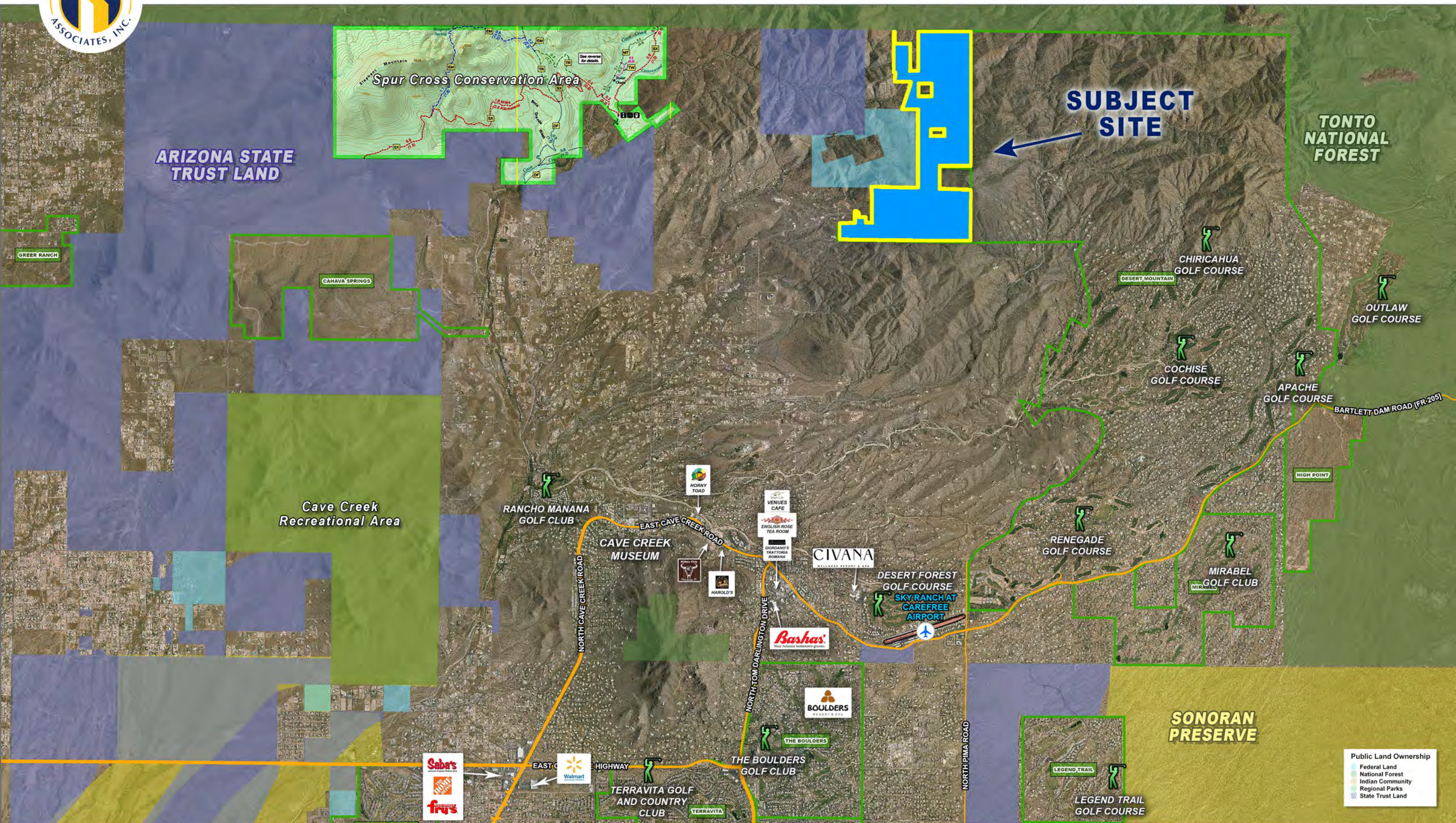
Submit

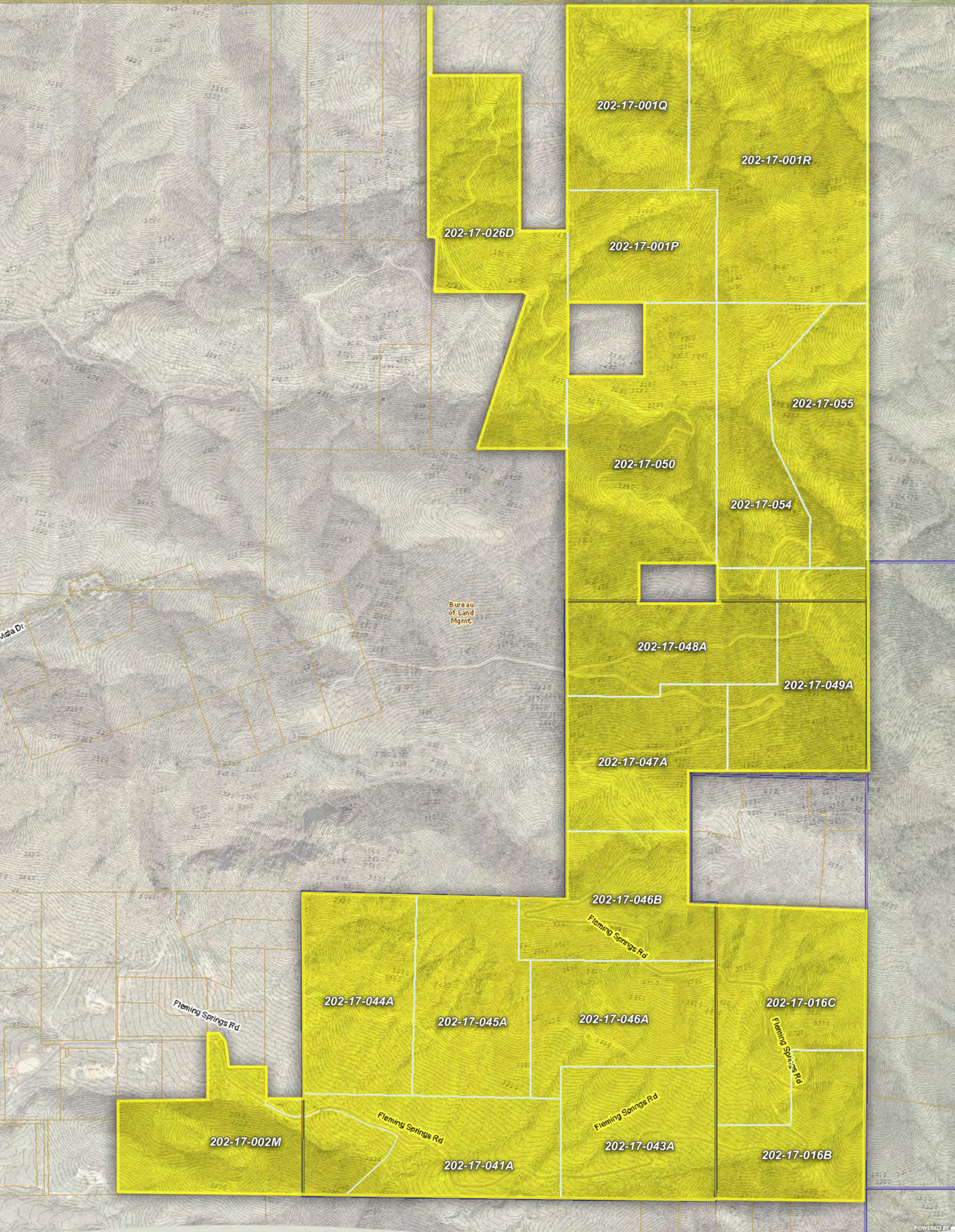
**May consider partial sale*

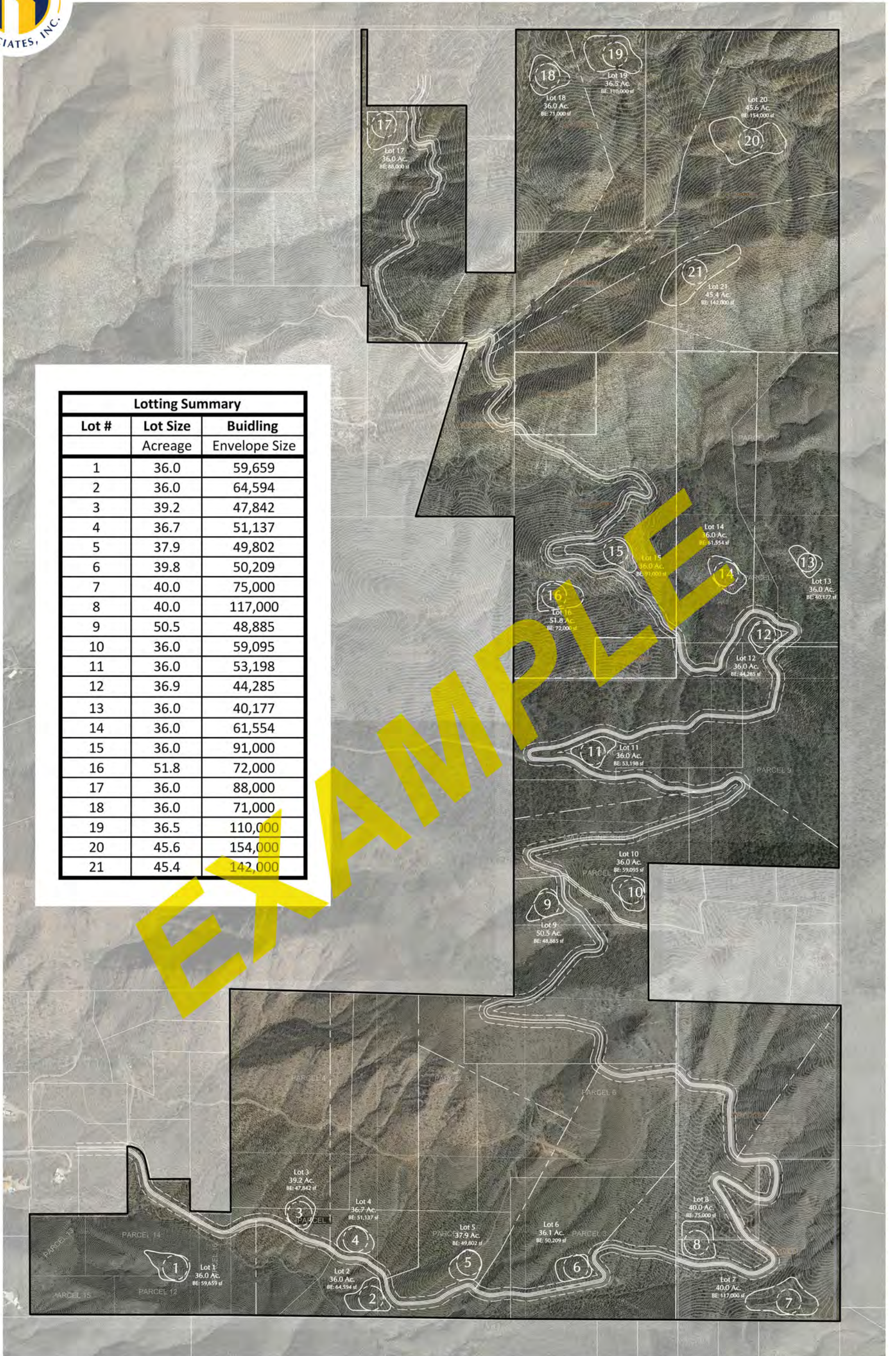
ZONING

R1-190 | Maricopa County









Lotting Summary		
Lot #	Lot Size Acreage	Buidling Envelope Size
1	36.0	59,659
2	36.0	64,594
3	39.2	47,842
4	36.7	51,137
5	37.9	49,802
6	39.8	50,209
7	40.0	75,000
8	40.0	117,000
9	50.5	48,885
10	36.0	59,095
11	36.0	53,198
12	36.9	44,285
13	36.0	40,177
14	36.0	61,554
15	36.0	91,000
16	51.8	72,000
17	36.0	88,000
18	36.0	71,000
19	36.5	110,000
20	45.6	154,000
21	45.4	142,000

GOLD MOUNTAIN
CAREFREE, ARIZONA
CONCEPTUAL LOTTING PLAN



GREY PICKETT





