



SOUTHEAST OF 16TH STREET AND THOMAS

VERANO VISTA



PHONE 480.367.0700 / FAX 480.367.8341
www.NathanLandAZ.com

7600 East Doubletree Ranch Road, Suite 150
Scottsdale, AZ 85258



SOUTHEAST OF 16TH STREET AND THOMAS

VERANO VISTA

LOCATION:

Located southeast of 16th Street and Thomas Road (at 1905 E. Virginia Avenue and 1904 E. Yale Street) in the City of Phoenix, AZ 85016

SIZE:

23,109 Square Feet or 8 Lots on .53 Acres

ASSESSOR PARCEL NUMBERS:

117-06-117A and 117B

ZONING:

[R-3](#) | City of Phoenix

PRICE:

\$450,000

TERMS:

Cash

PROPERTY TAXES:

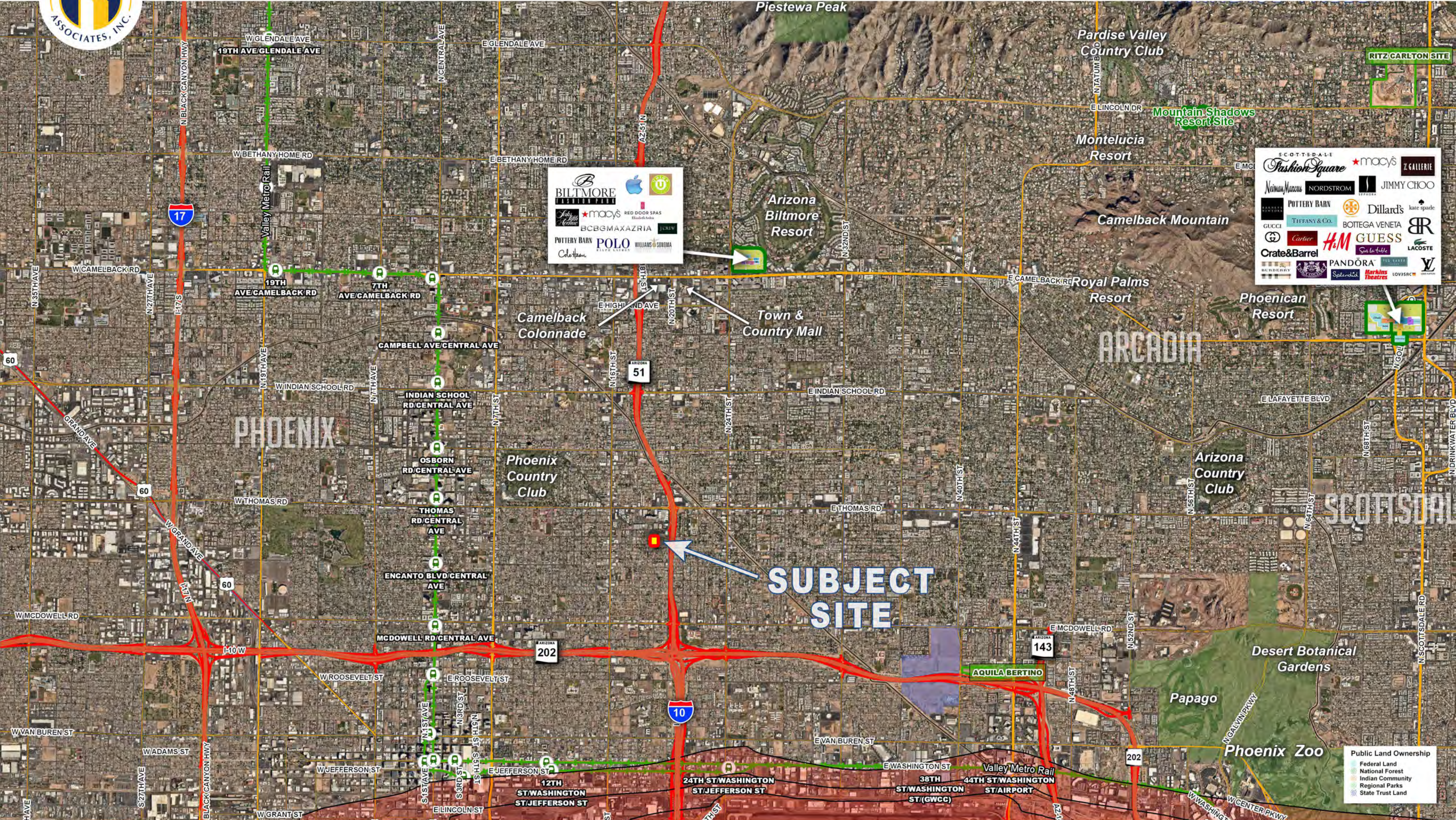
2019 Assessment: \$2,081.90

COMMENTS:

Site is an infill location with excellent access to 51 freeway and is across from Phoenix Children's Hospital and Arizona Heart Hospital.

ADDITIONAL DOCUMENTS: [Please click to view](#)

Final Plat
Grading and Drainage Plan with Offsite Improvements
Private Water and Sewer Plans
Public Fire Hydrant Plan
Site Plan and Elevations
Standard Plan Fourplex
Storm Water Pollution Prevention Plan

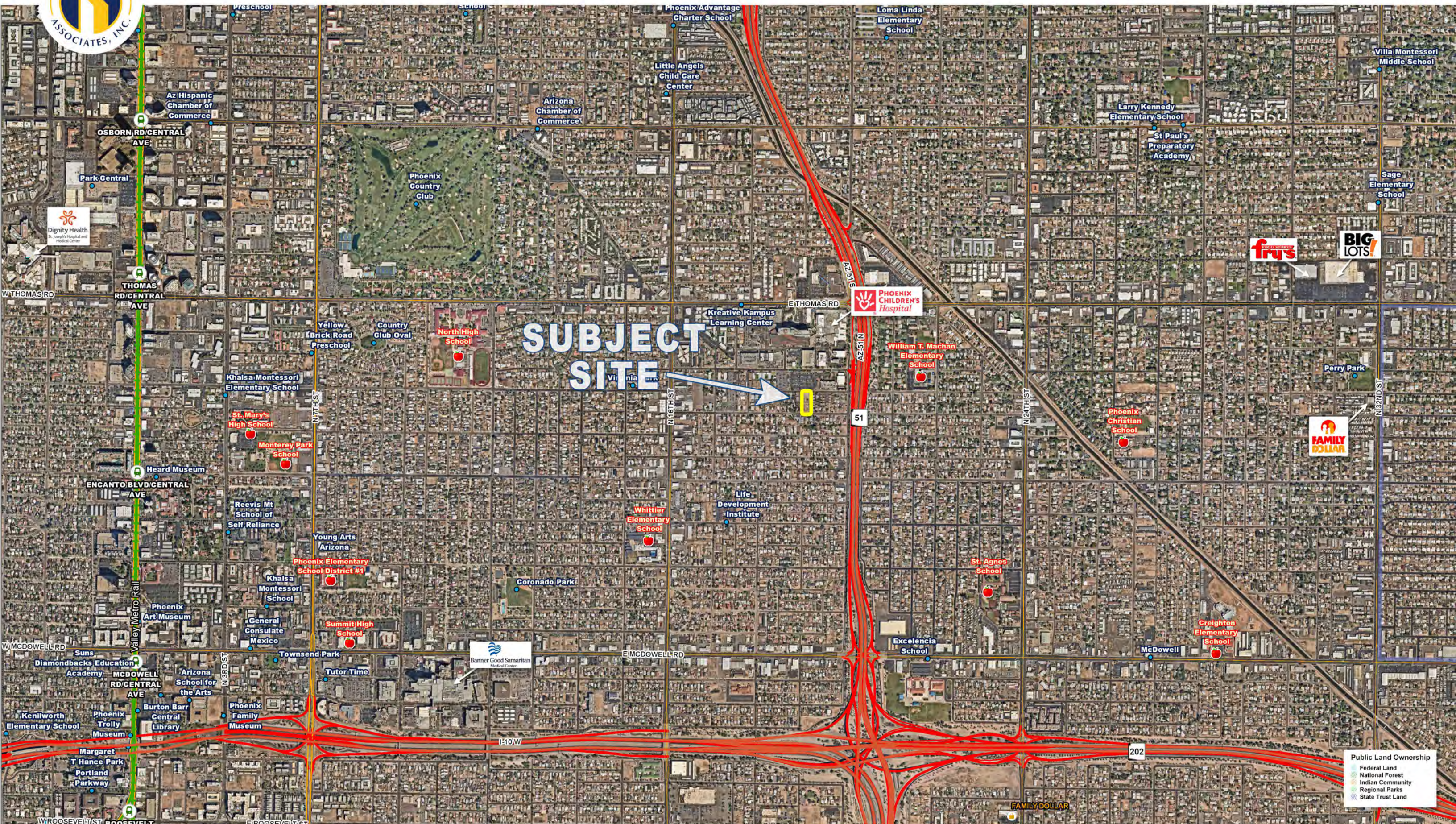


BILTMORE
 POTTERY BARN
 POLO
 Williams & Sonoma
 BCBGMAXAZRIA
 RED DOOR SPAS
 macy's

SCOTTSDALE
 Fashion Square
 Neiman Marcus
 POTTERY BARN
 GUCCI
 Crate&Barrel
 macy's
 NORDSTROM
 Dillard's
 TIFFANY & CO.
 Cartier
 H&M
 GUESS
 LACOSTE
 JIMMY CHOO
 kate spade
 BOTTEGA VENETA
 Pandora
 Harbors Theatres
 Z Gallerie
 JIMMY CHOO
 kate spade
 LACOSTE
 LV

Public Land Ownership

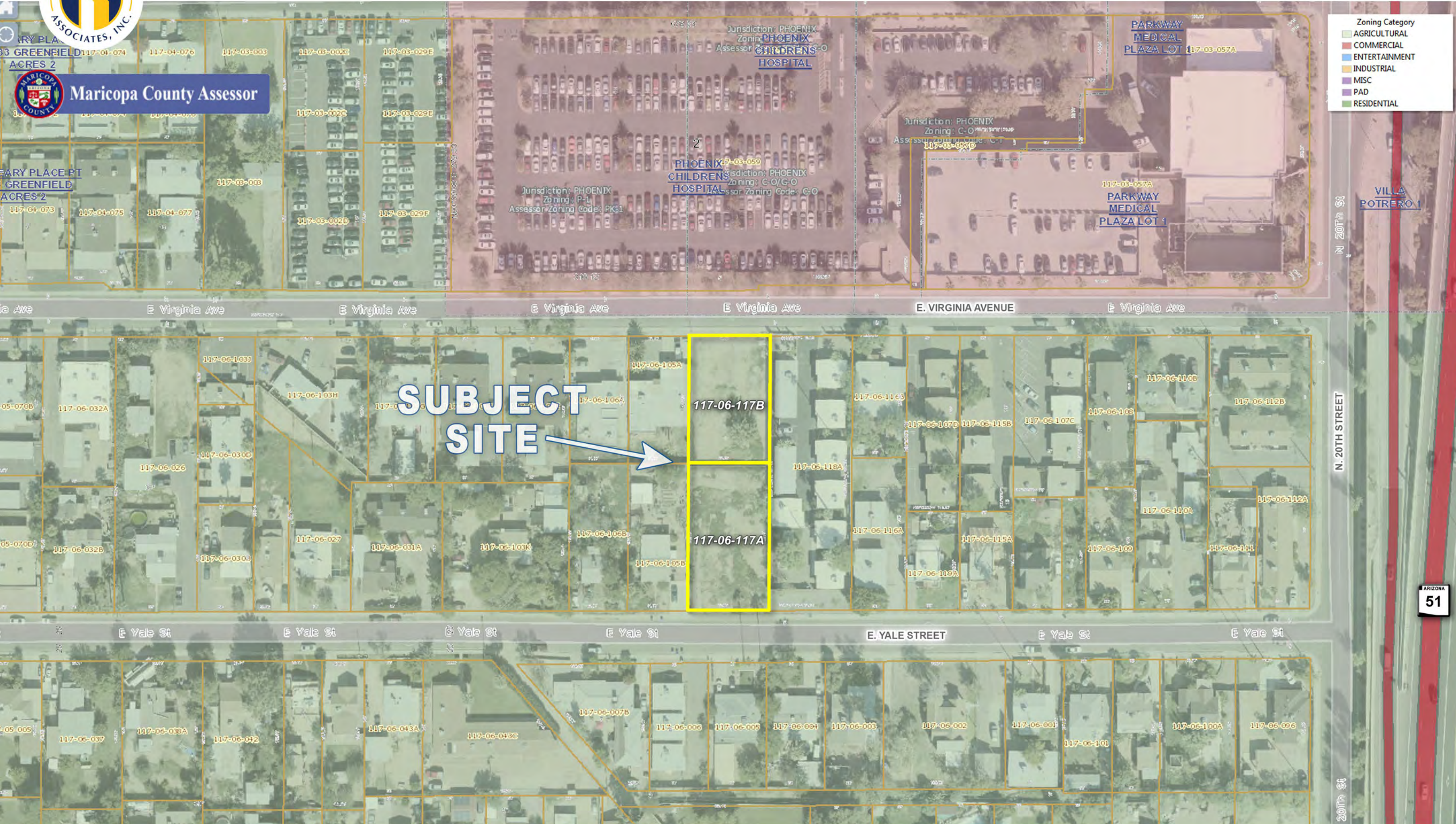
- Federal Land
- National Forest
- Indian Community
- Regional Parks
- State Trust Land





Maricopa County Assessor

- Zoning Category
- AGRICULTURAL
 - COMMERCIAL
 - ENTERTAINMENT
 - INDUSTRIAL
 - MISC
 - PAD
 - RESIDENTIAL



SUBJECT SITE



117-06-117B

117-06-117A