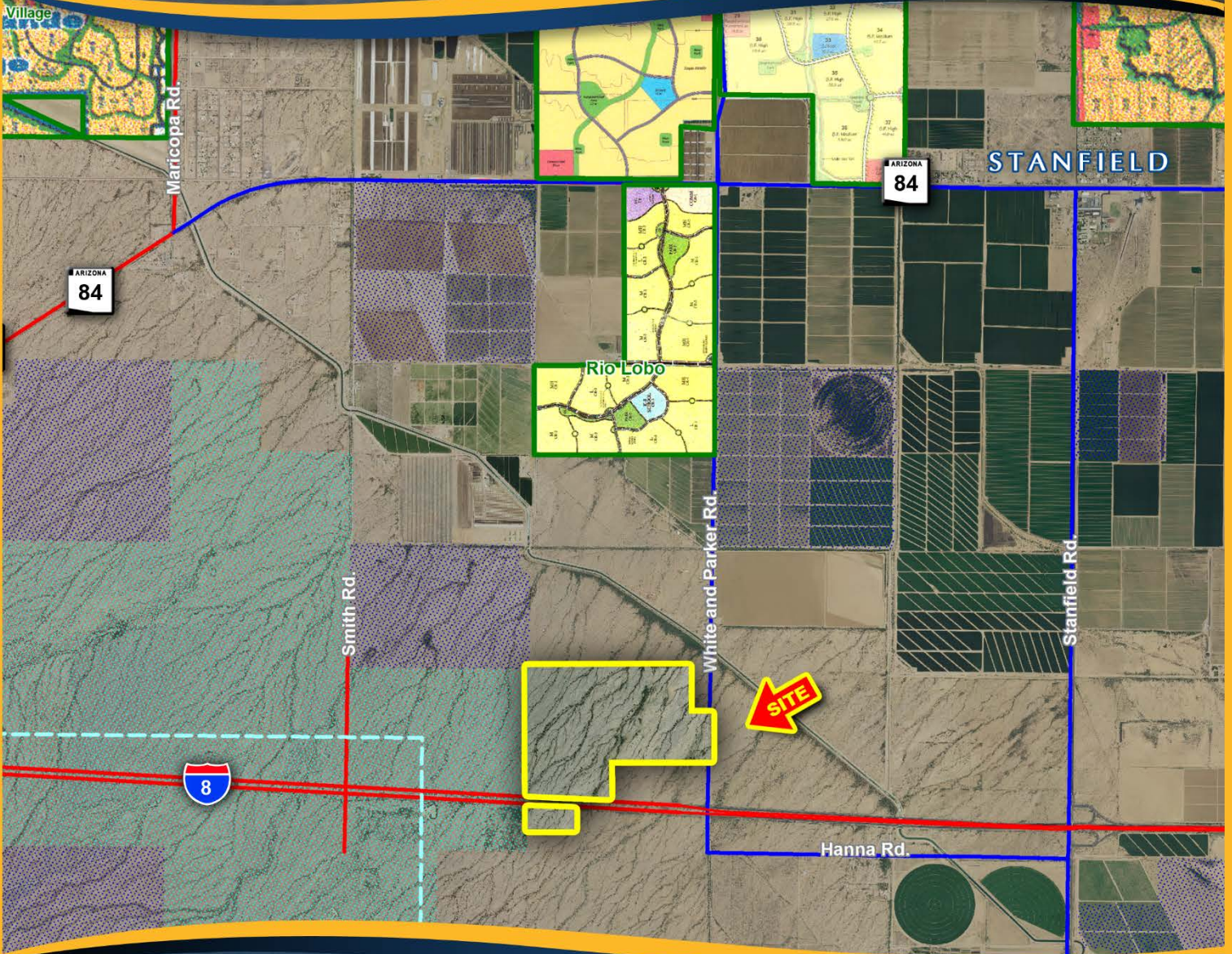


NATHAN & ASSOCIATES, INC.
EXCLUSIVELY PRESENTS

INTERSTATE 8 AND WHITE AND PARKER ROAD PINAL COUNTY, ARIZONA



NATIONAL MONUMENT



NATHAN & ASSOCIATES, INC.

7600 E. DOUBLETREE RANCH ROAD, SUITE 150

SCOTTSDALE · ARIZONA · 85258-2156

OFFICE: 480.367.0700 · FAX: 480.367.8341

WWW.NATHANANDASSOCIATESINC.COM



INTERSTATE 8 & WHITE AND PARKER ROAD PINAL COUNTY, ARIZONA

LOCATION:

Located west of Interstate 8 & White and Parker Road in Pinal County, Arizona.

SIZE:

371.56 Acres

ASSESSOR PARCEL NUMBERS:

500-10-003

ZONING:

General Rural (GR), minimum of 1.25 Acres

PRICE:

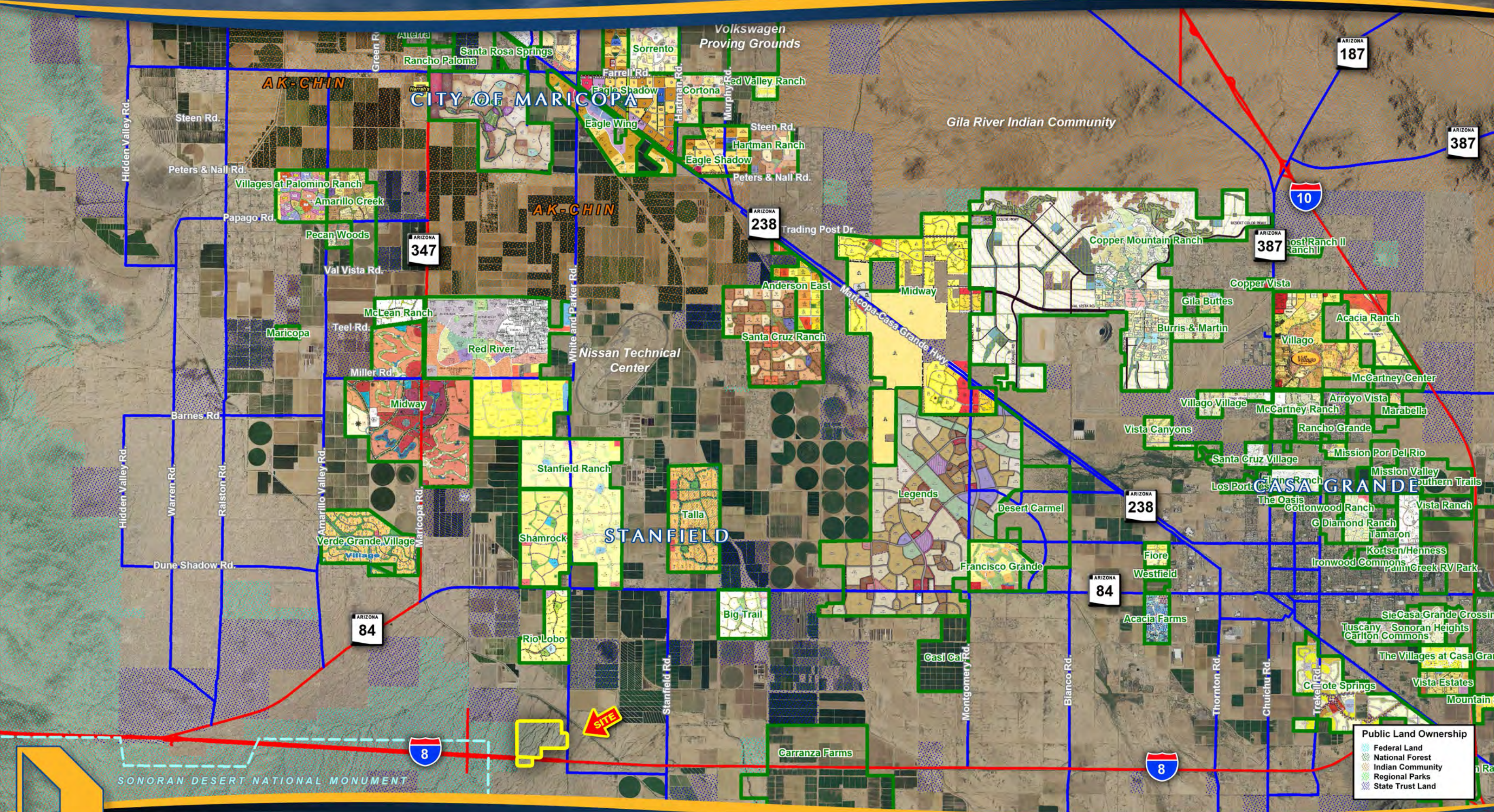
Submit

TERMS:

Cash

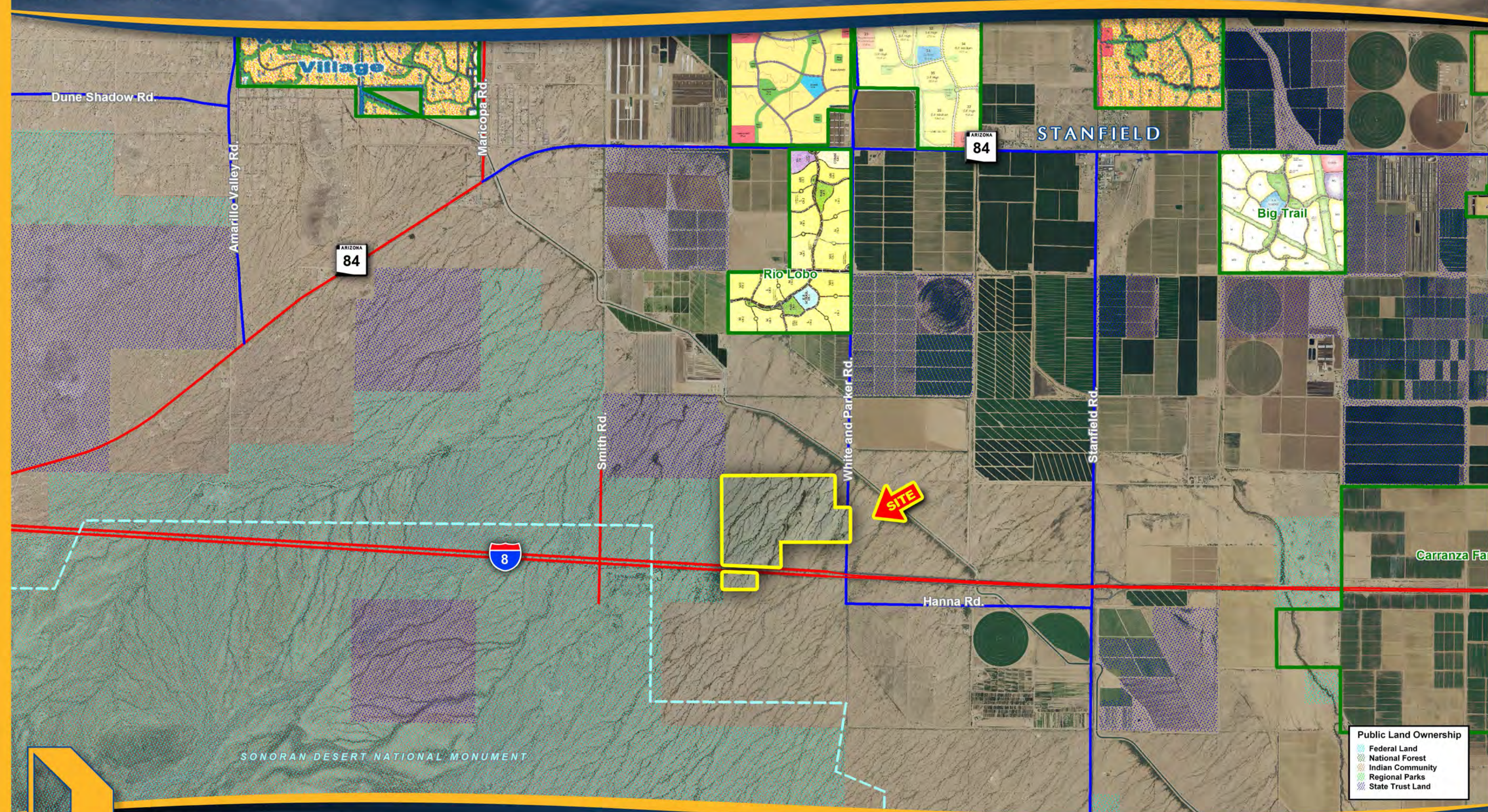
SOUTHEAST PINAL COUNTY SUBMARKET

INTERSTATE 8 AND WHITE AND PARKER ROAD



INTERSTATE 8 AND WHITE AND PARKER ROAD

PINAL COUNTY, ARIZONA



NATHAN & ASSOCIATES, INC.
7600 E. DOUBLETREE RANCH ROAD, SUITE 150 • SCOTTSDALE • ARIZONA • 85258-2156
OFFICE: 480.367.0700 • FAX: 480.367.8341
WWW.NATHANANDASSOCIATESINC.COM

This map was produced using data from private and governmental sources deemed to be reliable. The information herein is provided without representation or warranty.

INTERSTATE 8 AND WHITE AND PARKER ROAD

PINAL COUNTY, ARIZONA

Arizona State Trust Land

Federal Land

Antelope Peak Rd.

White and Parker Rd.

Beggs Rd.

Google™

SEC. 12, TN.7S RG.3E

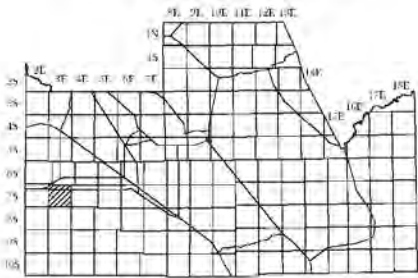
SEE MAP 500-05 1/2

SEE MAP 500-05 2/2

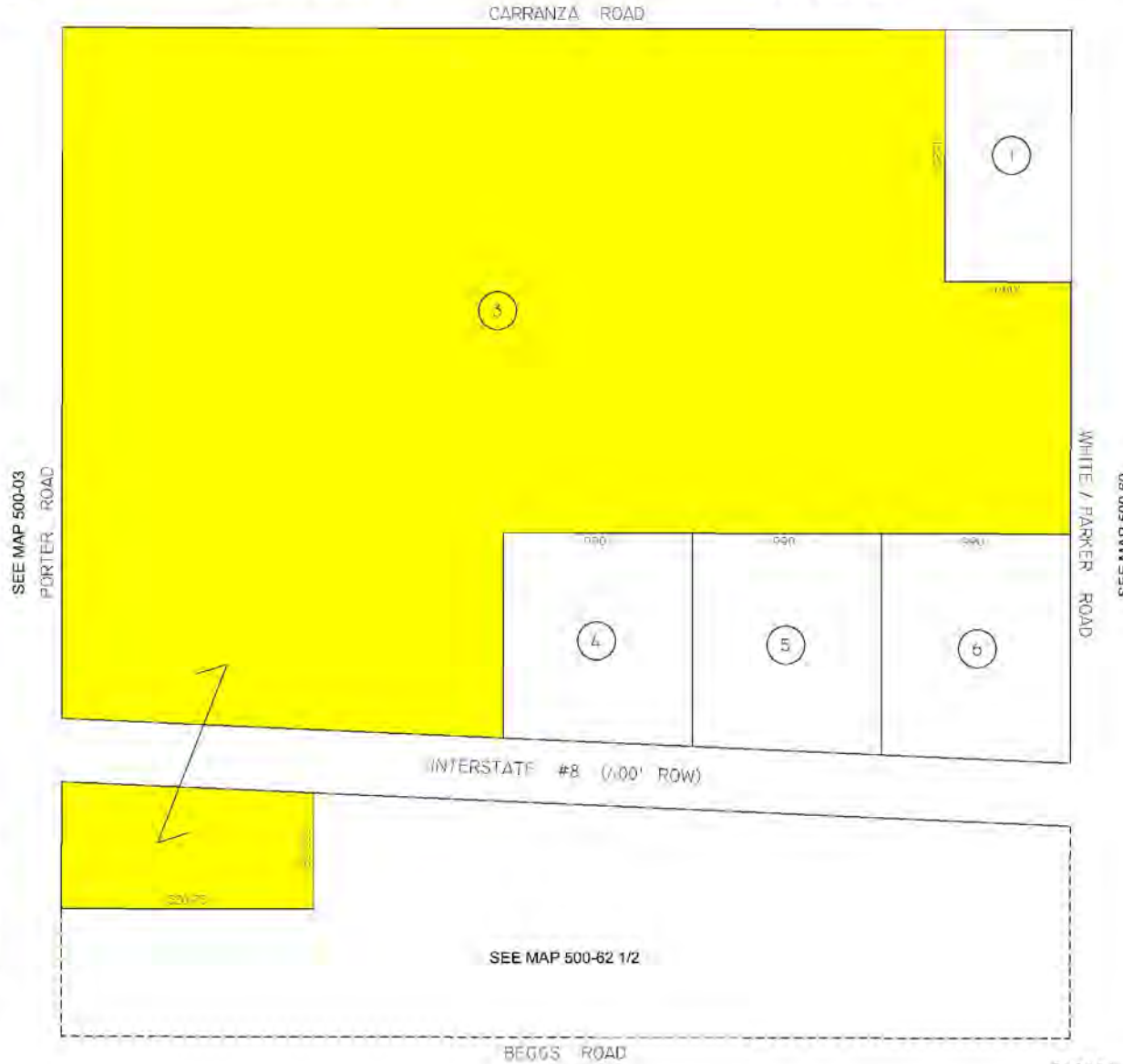
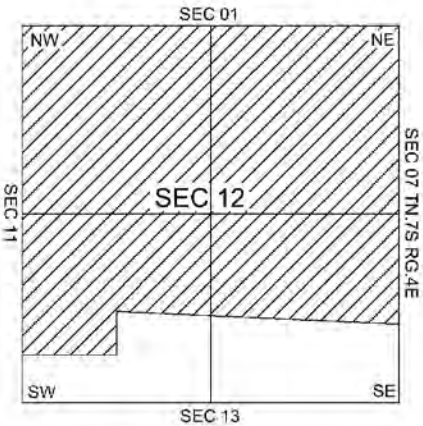
500-10

THIS MAP IS FOR VALUATION PURPOSES ONLY.
THIS OFFICE WILL NOT ASSUME LIABILITY FOR
REPRESENTATION, MEASUREMENTS OR ACREAGE.
SURVEYS & SUBDIVISION PLATS ARE ON FILE
WITH THE PINAL COUNTY RECORDER'S OFFICE.

LOCATION MAP



VICINITY MAP



4-24-2008
UPDATED BY CC