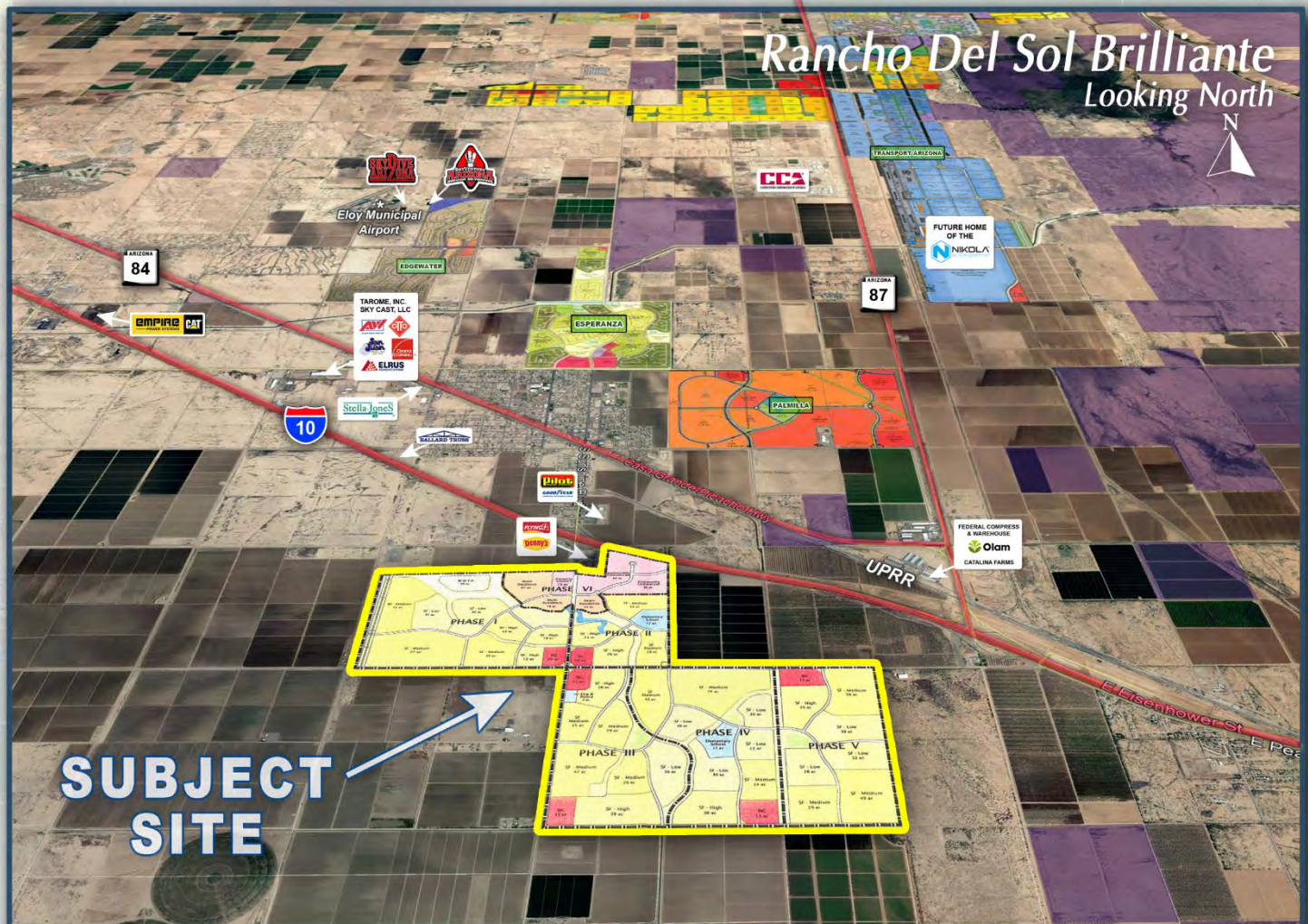


NATHAN & ASSOCIATES, INC.
EXCLUSIVELY PRESENTS

RANCHO DEL SOL BRILLIANTE

PHILLIPS ROAD AND SUNSHINE BLVD

CITY OF ELOY | PINAL COUNTY, ARIZONA



NATHAN & ASSOCIATES, INC.
7600 E. DOUBLETREE RANCH ROAD, SUITE 150
SCOTTSDALE • ARIZONA • 85258-2156
OFFICE: 480.367.0700 • FAX: 480.367.8341
WWW.NATHANANDASSOCIATESINC.COM



RANCHO DEL SOL BRILLANTE

PINAL COUNTY, ARIZONA

LOCATION:

Located at the intersection of Phillips Road and Sunshine Boulevard, City of Eloy, Pinal County, Arizona.

SIZE:

± 1,600.43 Acres

ASSESSOR PARCEL NUMBERS:

411-01-009A, 009C, 411-17-003, 004G, 008F, 411-19-001, 002, 003, 004, 005, 006, 007, 008A, 411-38-001K, 002A

ZONING:

PAD in Process

PRICE:

Submit

TERMS:

Cash

PROPOSED UTILITIES:

- Sewer: City of Eloy
- Water: Arizona Water Company

PROPERTY STATUS:

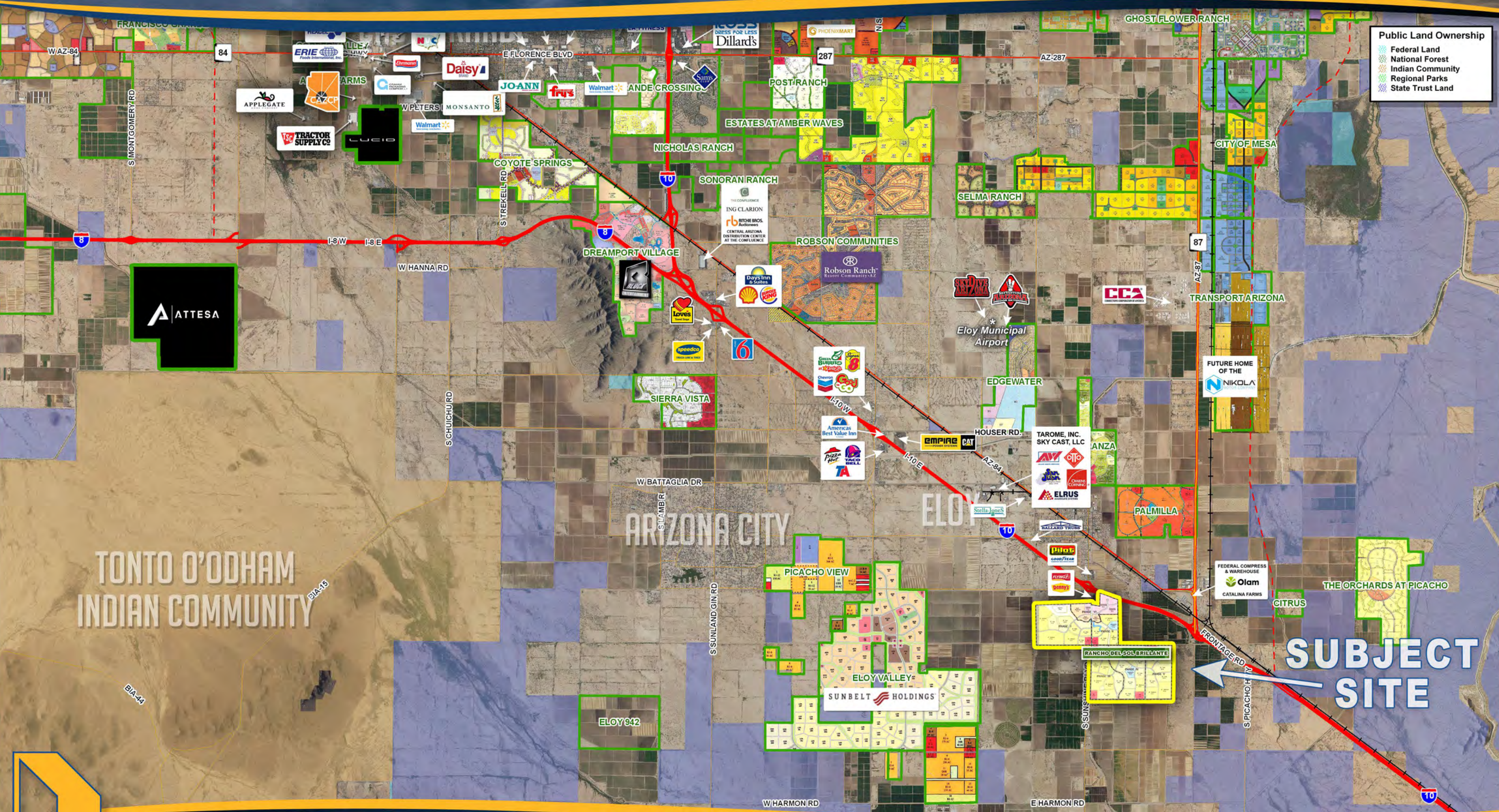
Currently Farmed

FUTURE USE:

Master Planned Community

RANCHO DEL SOL BRILLIANTE

PINAL COUNTY, ARIZONA



Public Land Ownership

- Federal Land
- National Forest
- Indian Community
- Regional Parks
- State Trust Land

TONTO O'ODHAM
INDIAN COMMUNITY

**SUBJECT
SITE**

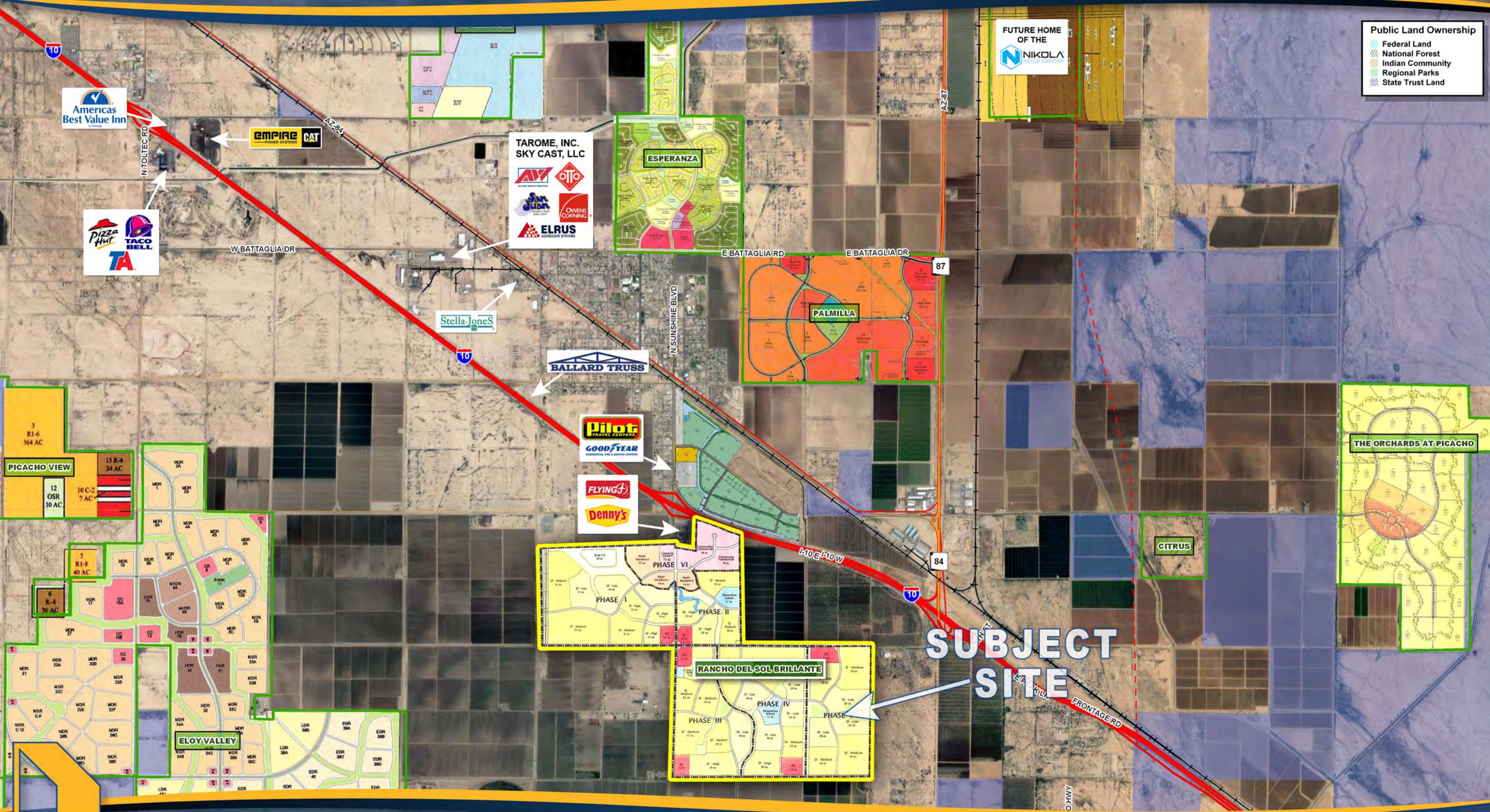


NATHAN & ASSOCIATES, INC.
7600 E. DOUBLETREE RANCH ROAD, SUITE 150 • SCOTTSDALE • ARIZONA • 85258-2156
OFFICE: 480.367.0700 • FAX: 480.367.8341
WWW.NATHANANDASSOCIATESINC.COM

This map was produced using data from private and governmental sources deemed to be reliable. The information herein is provided without representation or warranty.

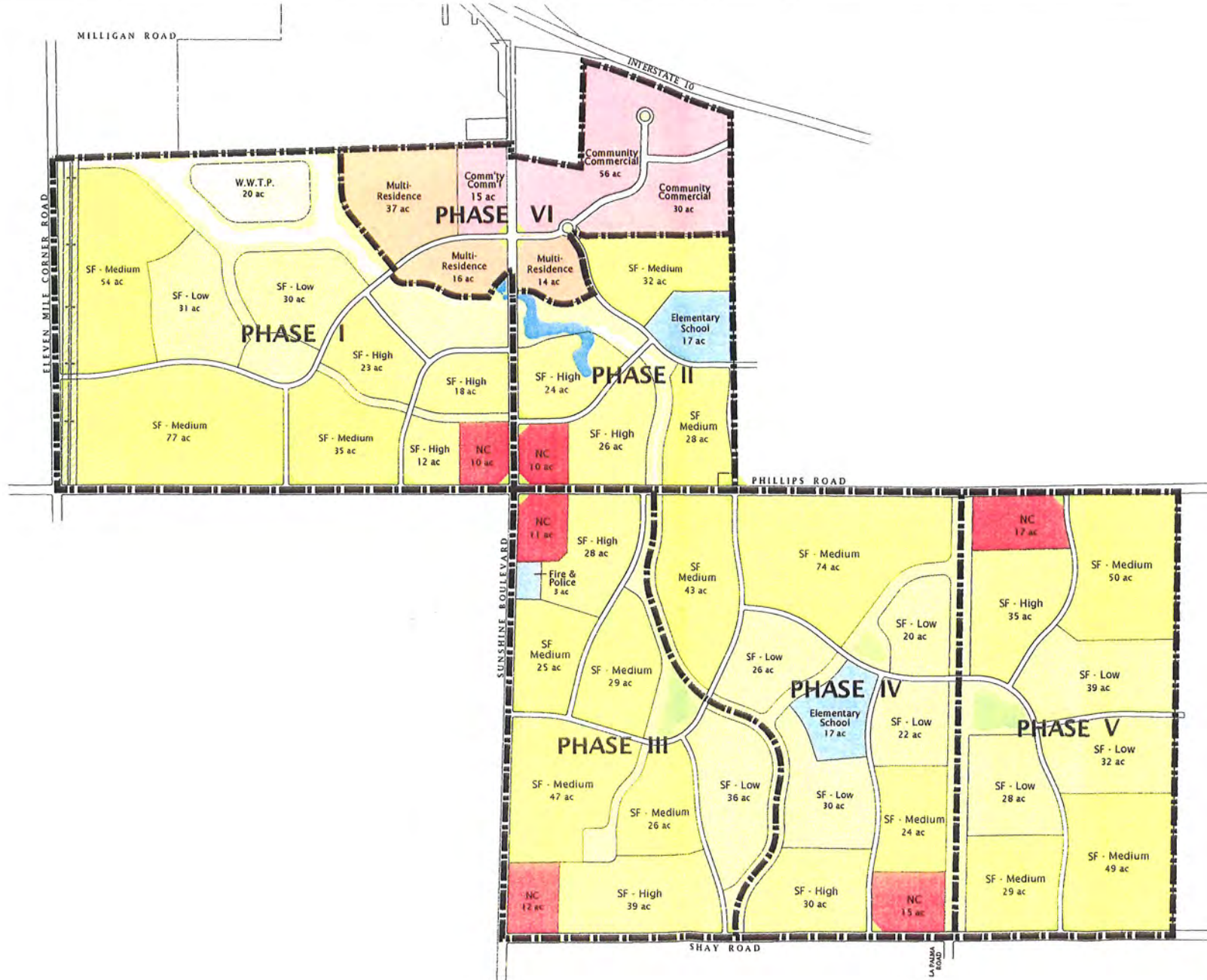
RANCHO DEL SOL BRILLIANTE

PINAL COUNTY, ARIZONA



NATHAN & ASSOCIATES, INC.
7600 E. DOUBLETREE RANCH ROAD, SUITE 150 • SCOTTSDALE • ARIZONA • 85258-2156
OFFICE: 480.367.0700 • FAX: 480.367.8341
WWW.NATHANANDASSOCIATESINC.COM

This map was produced using data from private and governmental sources deemed to be reliable. The information herein is provided without representation or warranty.



Rancho del Sol Brillante ELOY, ARIZONA



PRELIMINARY
PHASING PLAN
Exhibit W