



ROBERTS FAMILY FARM

PINAL COUNTY, ARIZONA

LOCATION:

Northwest corner of Highway 87 and Battaglia Drive, City of Eloy, Pinal County, Arizona.

SIZE:

± 656.84 Total Acres

ASSESSOR PARCEL NUMBERS:

401-48-049A and 049J

PRICE:

Submit

TERMS:

Cash

STATUS:

Farmed

PROPERTY TAXES:

2016 Assessment: \$30,830.66

IRRIGATION DISTRICT:

Central Arizona Irrigation and Drainage District

UTILITIES:

Water: City of Eloy

Electric: Arizona Public Service (APS)

Sewer: City of Eloy

Gas: Southwest Gas

ROBERTS FAMILY FARM

PINAL COUNTY, ARIZONA

Public Land Ownership

- Federal Land
- National Forest
- Indian Community
- Regional Parks
- State Trust Land

SUBJECT SITE

FUTURE HOME OF THE
NIKOLA

ATTESA

TONTO O'ODHAM
INDIAN COMMUNITY

NATHAN & ASSOCIATES, INC.
7600 E. DOUBLETREE RANCH ROAD, SUITE 150 • SCOTTSDALE • ARIZONA • 85258-2156
OFFICE: 480.367.0700 • FAX: 480.367.8341
WWW.NATHANANDASSOCIATESINC.COM

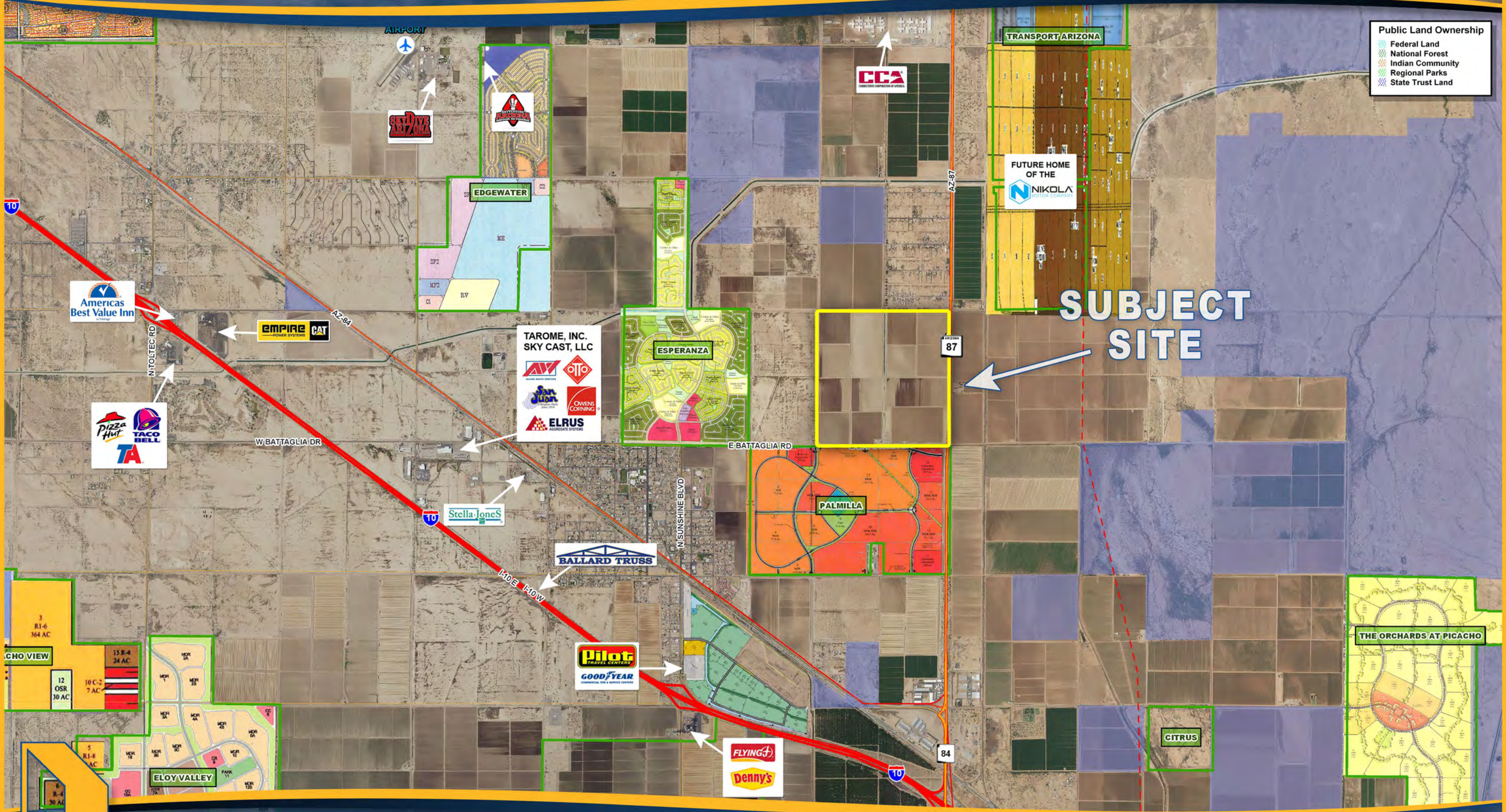
This map was produced using data from private and governmental sources deemed to be reliable. The information herein is provided without representation or warranty.

ROBERTS FAMILY FARM

PINAL COUNTY, ARIZONA

- Public Land Ownership**
- Federal Land
 - National Forest
 - Indian Community
 - Regional Parks
 - State Trust Land

SUBJECT SITE



NATHAN & ASSOCIATES, INC.
 7600 E. DOUBLETREE RANCH ROAD, SUITE 150 • SCOTTSDALE • ARIZONA • 85258-2156
 OFFICE: 480.367.0700 • FAX: 480.367.8341
 WWW.NATHANANDASSOCIATESINC.COM

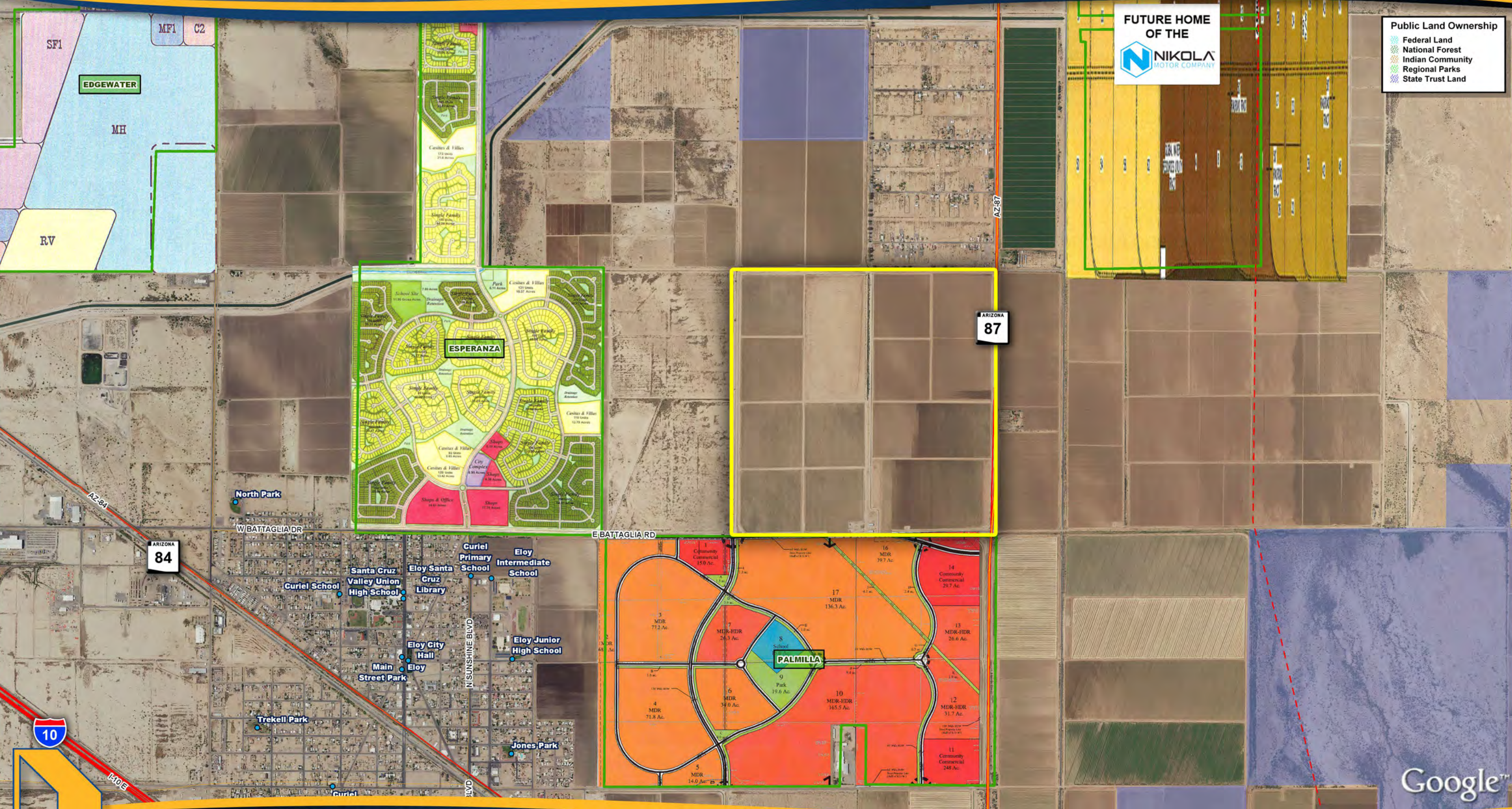
This map was produced using data from private and governmental sources deemed to be reliable. The information herein is provided without representation or warranty.

ROBERTS FAMILY FARM

PINAL COUNTY, ARIZONA

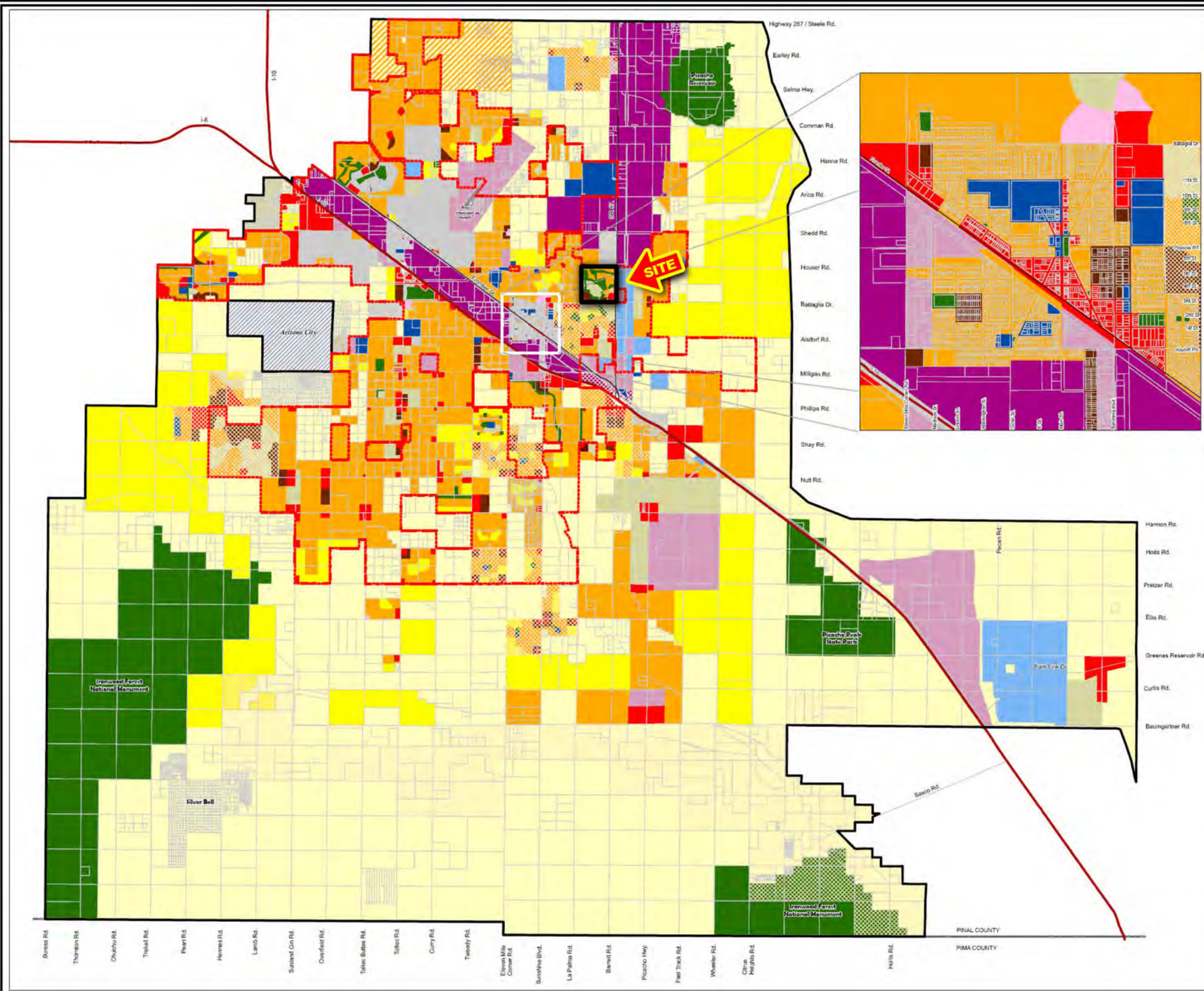
FUTURE HOME
OF THE
NIKOLA
MOTOR COMPANY

- Public Land Ownership
- Federal Land
 - National Forest
 - Indian Community
 - Regional Parks
 - State Trust Land



NATHAN & ASSOCIATES, INC.
7600 E. DOUBLETREE RANCH ROAD, SUITE 150 • SCOTTSDALE • ARIZONA • 85258-2156
OFFICE: 480.367.0700 • FAX: 480.367.8341
WWW.NATHANANDASSOCIATESINC.COM

This map was produced using data from private and governmental sources deemed to be reliable. The information herein is provided without representation or warranty.



CITY OF ELOY



**2010 General Plan
LAND USE**

Legend

- Land Use Designations**
- Estate Density Residential (0.2 to 1.0 du/ac)
 - Low Density Residential (1.0 to 3.0 du/ac)
 - Medium Density Residential (3.0 to 6.0 du/ac)
 - Medium-High Density Residential (6.0 to 10 du/ac)
 - High Density Residential (10 to 24 du/ac)
 - Neighborhood Commercial
 - Community Commercial
 - Public/Institutional
 - Mixed-Use
 - Light Industrial
 - General Industrial
 - Parks/Open Space
 - Planned Community Area
 - City Limits 2009
 - Planning Area Boundary
 - Overlapped Planning Area w/ Casa Grande
 - Interstate Highway
 - State and County Highways
 - Unincorporated Arizona City



Exhibit #2

Data and shapefiles were obtained from a number of government agencies including Pinal County, and the City of Eloy.
This GIS Map is a limited representation intended for planning purposes only.
W.C. Scutten Inc.
Municipal Engineers and Planners
1826 N. Lincoln Rd. Ste. 310
Goodyear, AZ 85395
November 2010

