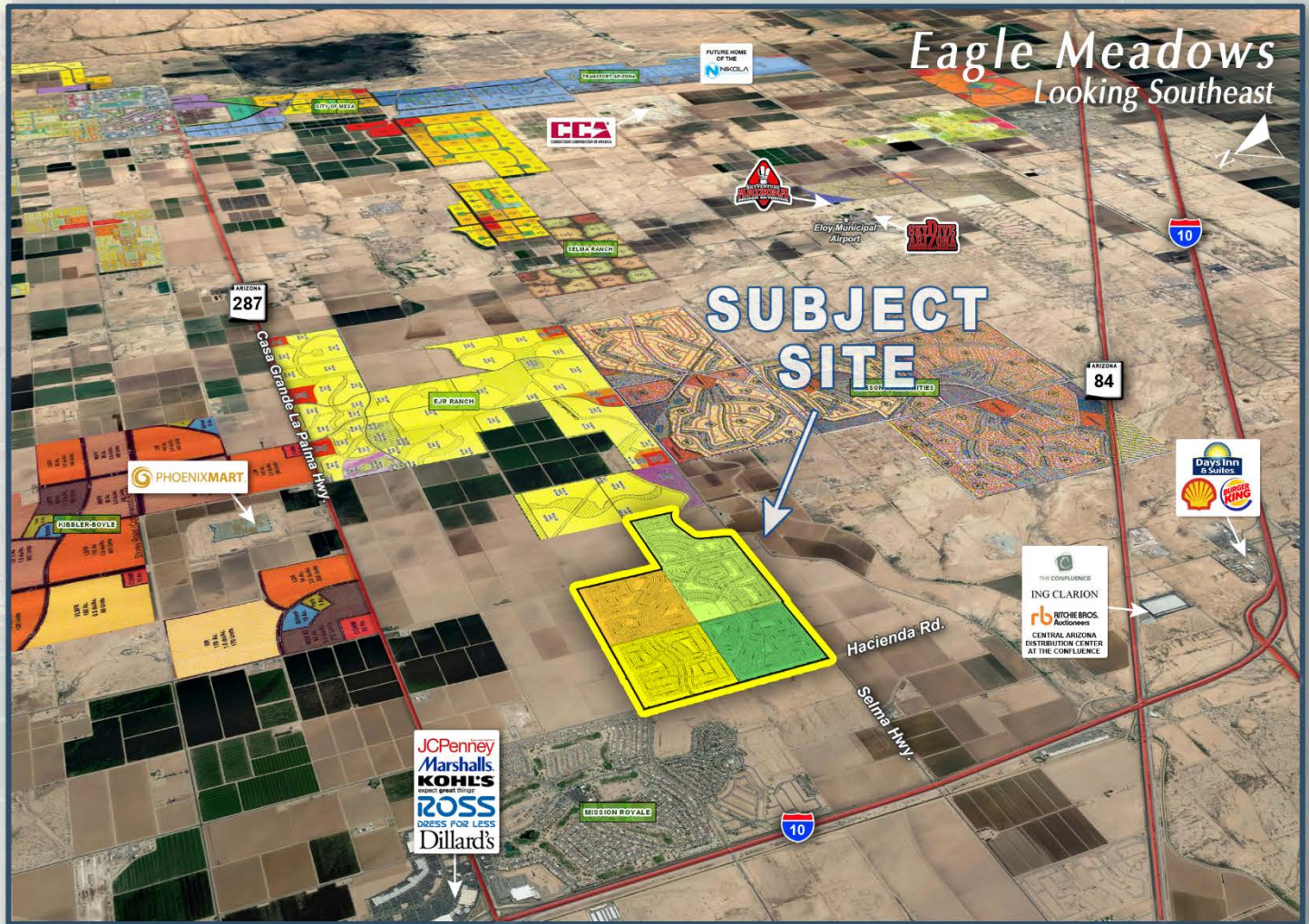


NATHAN & ASSOCIATES, INC.  
EXCLUSIVELY PRESENTS

# EAGLE MEADOWS

## NWC SELMA HWY AND HACIENDA ROAD

CITY OF CASA GRANDE, ARIZONA



**NATHAN & ASSOCIATES, INC.**  
7600 E. DOUBLETREE RANCH ROAD, SUITE 150  
SCOTTSDALE • ARIZONA • 85258-2156  
OFFICE: 480.367.0700 • FAX: 480.367.8341  
WWW.NATHANANDASSOCIATESINC.COM



# EAGLE MEADOWS

CITY OF CASA GRANDE, ARIZONA

**LOCATION:**

Located at the northeast corner of Selma Highway and Hacienda Road in Casa Grande, Arizona.

**SIZE:**

± 745.20 Acres

**BUILDING REQUIREMENTS:**

- Minimum Lot Area: 6,325 SF
- Minimum Distance Between Buildings: 10'
- Minimum Yard Setbacks:  
Front: 15' – 23' | Rear: 20' | Side (Interior): 5' and 10' | Side (Corner): 15'

**ZONING:**

[Planned Area Development](#) (Please click to view document)

**PRICE:**

Submit

**UTILITIES:**

Water: Arizona Water Company | Sewer, Refuse, Fire: City of Casa Grande | Gas: Southwest Gas Company | Electric Service: Arizona Public Service | Police: Casa Grande Police Department | Telephone: Qwest Communications

**PHASING:**

Eagle Meadows at Casa Grande, Phase I		
154.78 Acres	542 Proposed Lots	Consists of 8 Residential Neighborhoods
Eagle Meadows at Casa Grande, Phase II		
161.90 Acres	566 Proposed Lots	Consists of 3 Residential Neighborhoods
Eagle Meadows at Casa Grande, Phase III		
155.79 Acres	545 Proposed Lots	Consists of 3 Residential Neighborhoods
Eagle Meadows at Casa Grande, Phase IV		
275.98 Acres	953 Proposed Lots	Consists of 7 Residential Neighborhoods

**STATUS:**

Farmed

# PINAL COUNTY SUBMARKET

## EAGLE MEADOWS

**Public Land Ownership**

- Federal Land
- National Forest
- Indian Community
- Regional Parks
- State Trust Land

**SUBJECT SITE**

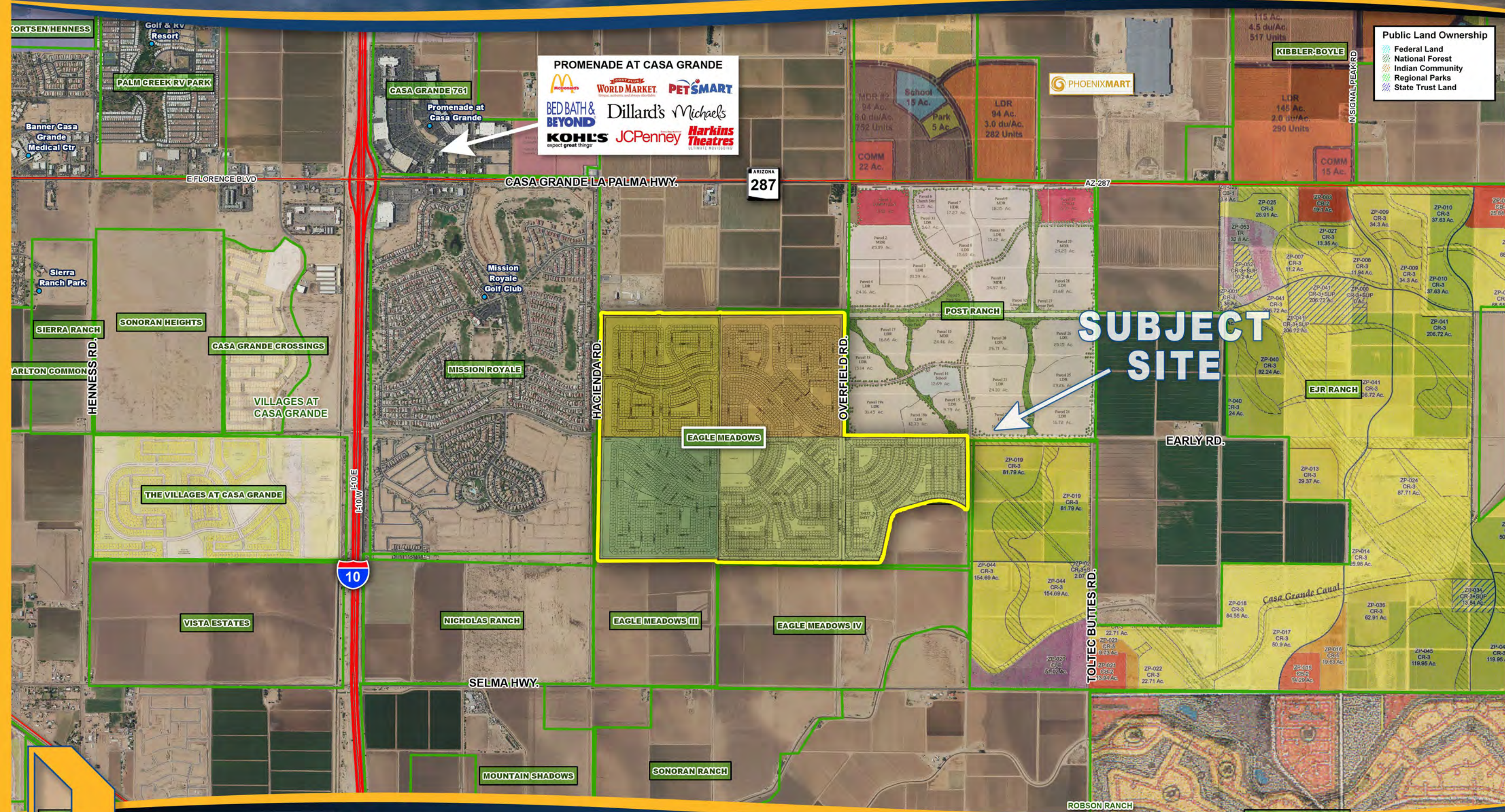


NATHAN & ASSOCIATES, INC.  
 7600 E. DOUBLETREE RANCH ROAD, SUITE 150 • SCOTTSDALE • ARIZONA • 85258-2156  
 OFFICE: 480.367.0700 • FAX: 480.367.8341  
 WWW.NATHANANDASSOCIATESINC.COM

This map was produced using data from private and governmental sources deemed to be reliable. The information herein is provided without representation or warranty.

# EAGLE MEADOWS

## NEC SELMA HIGHWAY AND HACIENDA ROAD | CASA GRANDE, ARIZONA



**PROMENADE AT CASA GRANDE**

expect great things

**SUBJECT SITE**

- Public Land Ownership**
- Federal Land
  - National Forest
  - Indian Community
  - Regional Parks
  - State Trust Land

# Eagle Meadows at Casa Grande

