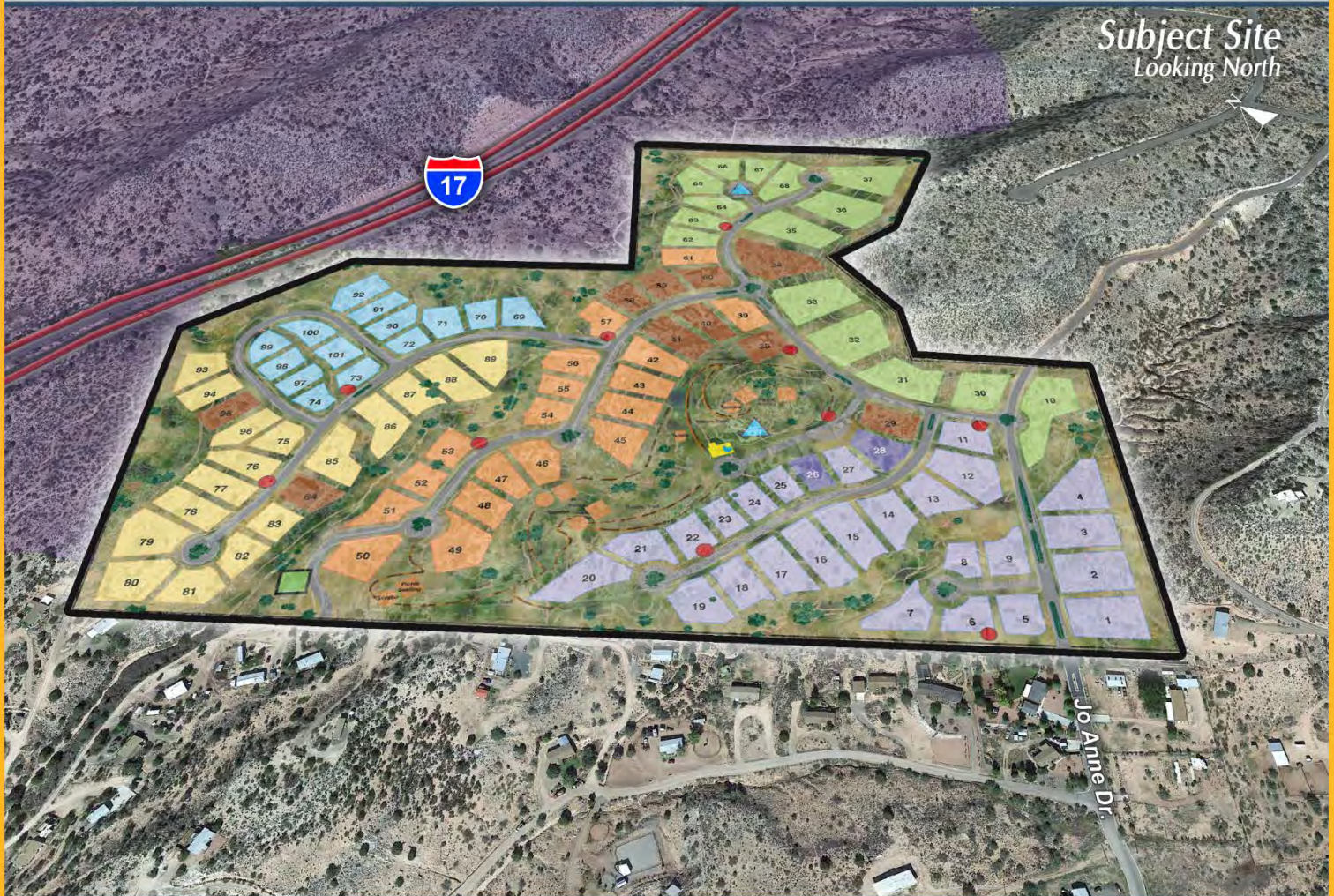


NATHAN & ASSOCIATES, INC.
EXCLUSIVELY PRESENTS

BEAVER CREEK PRESERVE

I-17 AND BEAVER CREEK ROAD

RIMROCK (YAVAPAI COUNTY), ARIZONA



NATHAN & ASSOCIATES, INC.
7600 E. DOUBLETREE RANCH ROAD, SUITE 150
SCOTTSDALE • ARIZONA • 85258-2156
OFFICE: 480.367.0700 • FAX: 480.367.8341
WWW.NATHANANDASSOCIATESINC.COM



BEAVER CREEK PRESERVE

GATED RESIDENTIAL COMMUNITY WITH CLUBHOUSE

LOCATION:

Beaver Creek Preserve is located off Interstate 17 at Exit 293. Site is both east and west of Jo Anne Road and north of Beaver Creek Road in Rimrock, Arizona (Yavapai County).

Property is 1 mile from Montezuma's Well and is 20 minutes from Cottonwood and Sedona, and 10 minutes from Cornville.

SIZE:

82 platted lots with improvements, but not graded.

ZONING:

R-2 Yavapai County

PRICE:

Asking \$68,750 per lot, or \$5,637,500

TERMS:

Cash

HOA:

\$210 per Quarter

COMMENTS:

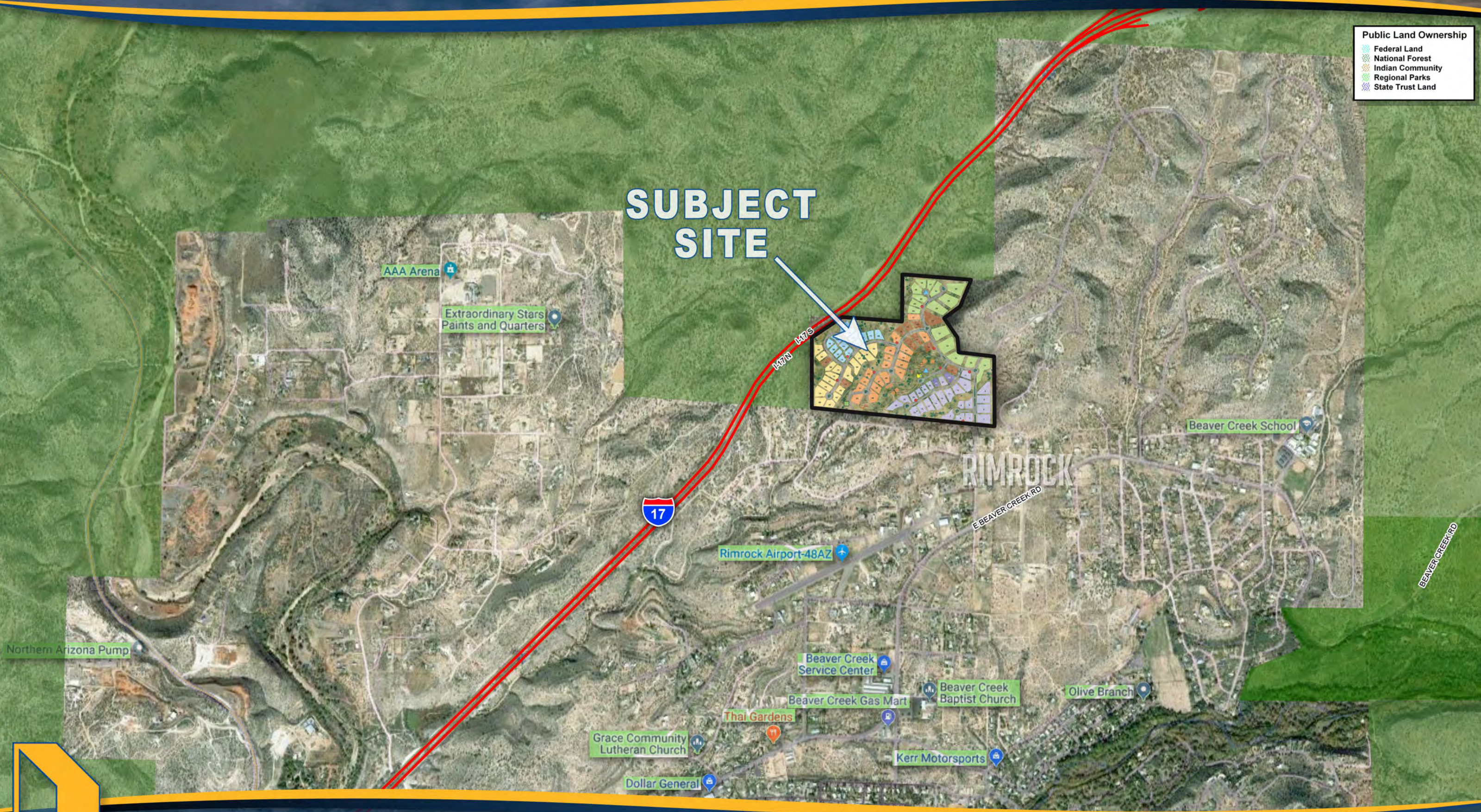
Site has an excellent location near Sedona, Cottonwood, and Camp Verde, and 45 minutes away from Flagstaff or Prescott. This planned community is a gated community with re-surfaced roads, and clubhouse with pool, tennis courts, and hiking trails. Project has its own existing sewer system.

ADDITIONAL DOCUMENTS: [Please click to view](#)

CC & R's
Design Guidelines
Public Report
Topography Map
Zoning Map

BEAVER CREEK PRESERVE

RIMROCK, ARIZONA



Public Land Ownership

- Federal Land
- National Forest
- Indian Community
- Regional Parks
- State Trust Land

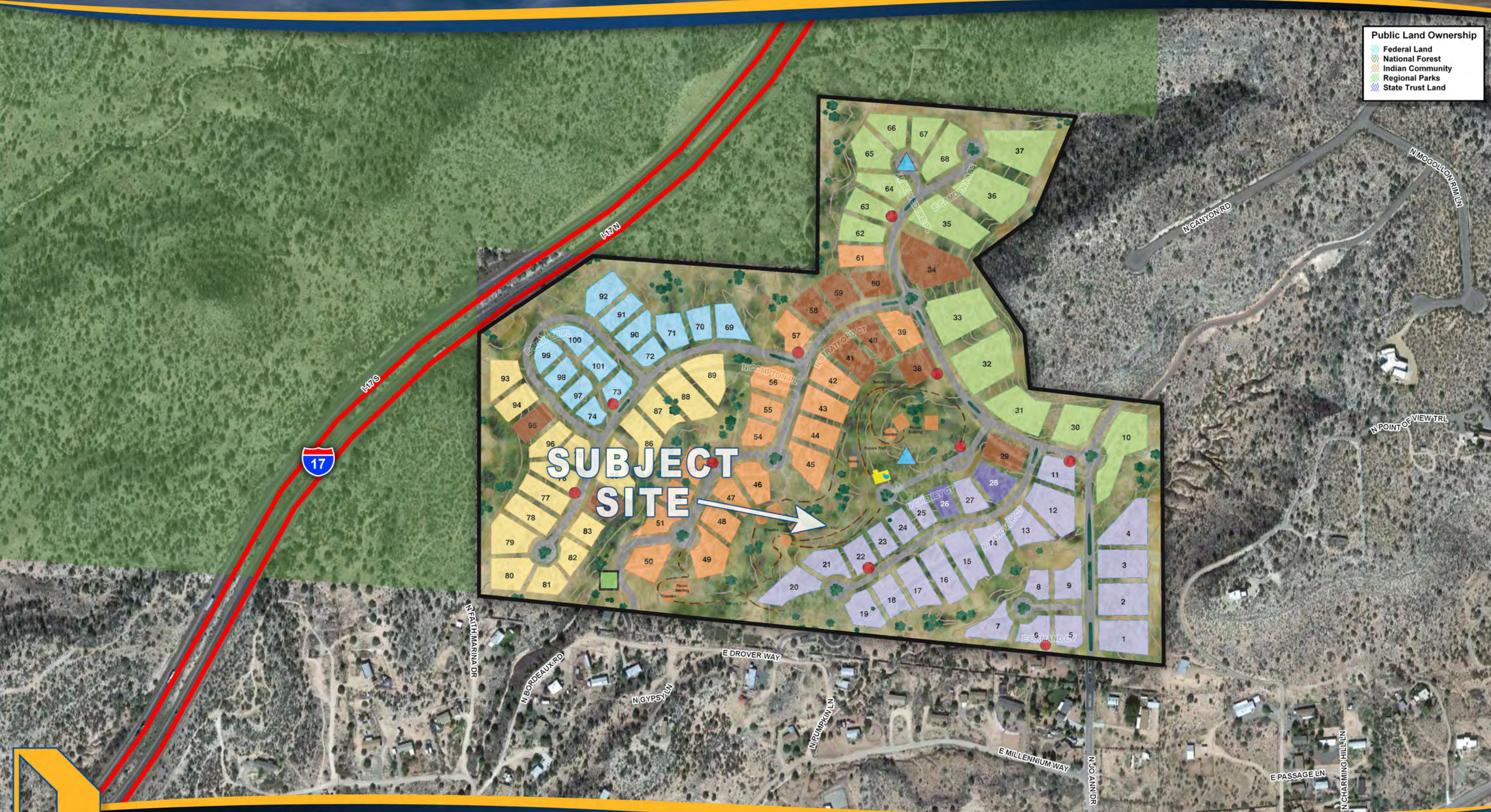


NATHAN & ASSOCIATES, INC.
7600 E. DOUBLETREE RANCH ROAD, SUITE 150 • SCOTTSDALE • ARIZONA • 85258-2156
OFFICE: 480.367.0700 • FAX: 480.367.8341
WWW.NATHANANDASSOCIATESINC.COM

This map was produced using data from private and governmental sources deemed to be reliable. The information herein is provided without representation or warranty.

BEAVER CREEK PRESERVE

RIMROCK, ARIZONA



Public Land Ownership

- Federal Land
- National Forest
- Indian Community
- Regional Parks
- State Trust Land



NATHAN & ASSOCIATES, INC.
7600 E. DOUBLETREE RANCH ROAD, SUITE 150 • SCOTTSDALE • ARIZONA • 85258-2156
OFFICE: 480.367.0700 • FAX: 480.367.8341
WWW.NATHANANDASSOCIATESINC.COM

This map was produced using data from private and governmental sources deemed to be reliable. The information herein is provided without representation or warranty.

THE CUSTOM HOMES AT
Beaver Creek
P R E S E R V E

Exit 298 - Sedona



BEAVER CREEK PRESERVE

PHOTOGRAPHY



GATE



MAILBOXES



CLUBHOUSE AND HIKING TRAILS



NATHAN & ASSOCIATES, INC.
7600 E. DOUBLETREE RANCH ROAD, SUITE 150 • SCOTTSDALE • ARIZONA • 85258-2156
OFFICE: 480.367.0700 • FAX: 480.367.8341
WWW.NATHANANDASSOCIATESINC.COM

This map was produced using data from private and governmental sources deemed to be reliable. The information herein is provided without representation or warranty.