



RIMROCK (YAVAPAI COUNTY), ARIZONA

BEAVER CREEK PRESERVE

COCONINO NATIONAL
FOREST



**SUBJECT
SITE**



Property
Looking Northwest



PHONE 480.367.0700 / FAX 480.367.8341
www.NathanLandAZ.com

7600 East Doubletree Ranch Road, Suite 150
Scottsdale, AZ 85258



FOR MORE INFORMATION, CONTACT:
NATE NATHAN / nate@nathanlandaz.com
SEAN GILLESPIE / sean@nathanlandaz.com

RIMROCK (YAVAPAI COUNTY), ARIZONA

BEAVER CREEK PRESERVE

LOCATION

Beaver Creek Preserve is located off Interstate 17 at Exit 293. Site is both east and west of Jo Anne Road and north of Beaver Creek Road in Rimrock, Arizona (Yavapai County).

Property is 1 mile from Montezuma's Well and is 20 minutes from Cottonwood and Sedona, and 10 minutes from Cornville.

SIZE

52 platted lots with improvements, but not graded.

ZONING

R-2 | Yavapai County

PRICE

Submit

TERMS

Cash

HOA

\$210 per Quarter

COMMENTS

Site has an excellent location near Sedona, Cottonwood, and Camp Verde, and 45 minutes away from Flagstaff or Prescott. This planned community is a gated community with re-surfaced roads, and clubhouse with pool, tennis courts, and hiking trails. Project has its own existing sewer system.

DUE DILIGENCE

[Please click to view](#)

CC & R's

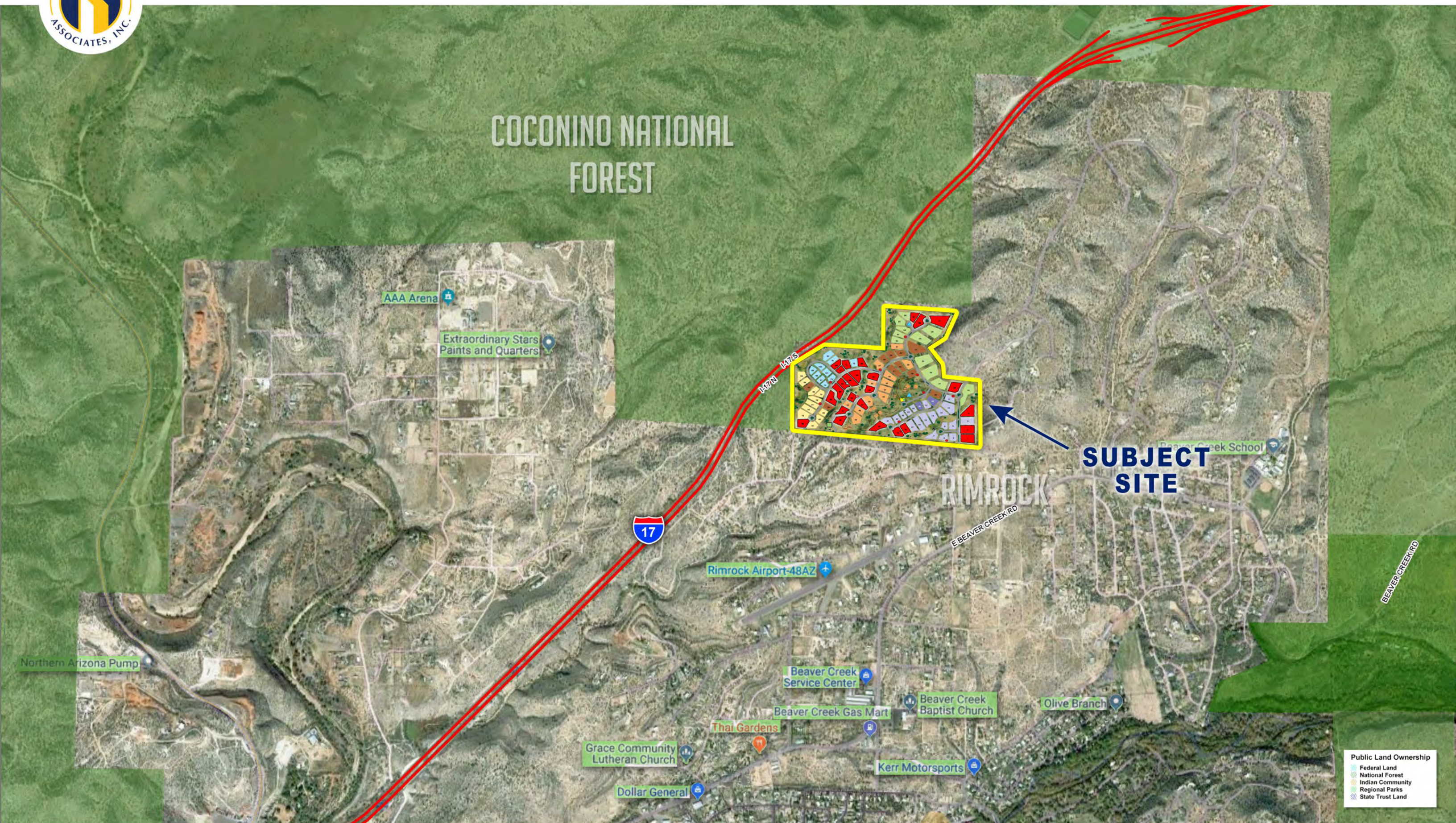
Design Guidelines

Public Report

Topography Map

Zoning Map







COCONINO NATIONAL
FOREST



**SUBJECT
SITE**

Public Land Ownership
Federal Land
National Forest
Indian Community
Regional Parks
State Trust Land



